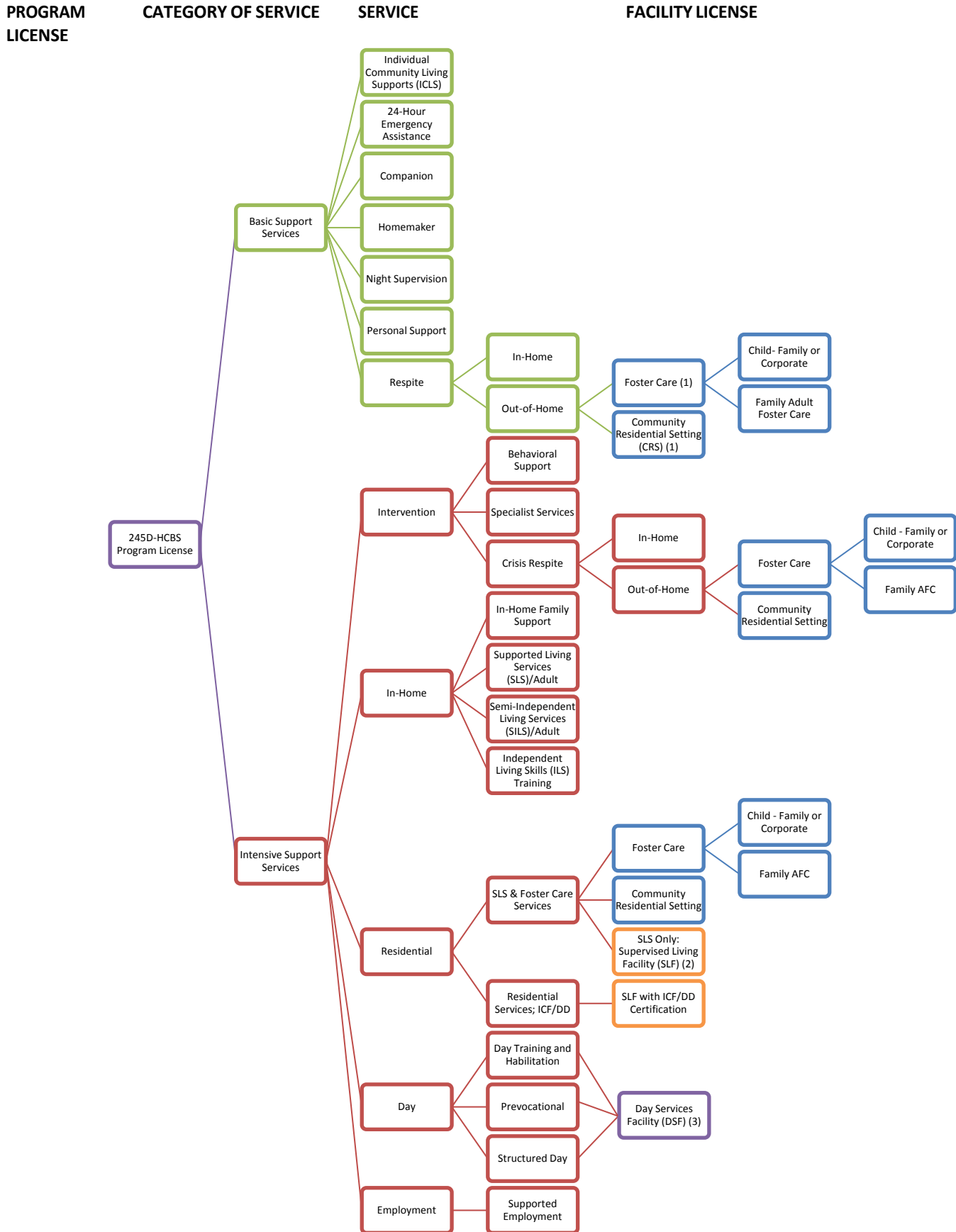


OVERVIEW OF 245D HCBS LICENSE STRUCTURE



¹Foster Care (AFC Rule 203 & Child Foster Care Rule 2960) & CRS (MN Statutes, sections 245D.21 – 245D.26) licensed by County

²SLF (MN. Statutes, Chapter 144) licensed by MN Dept. of Health; no new development of SLS in SLF or ICF/DD

³DSF (MN Statutes, sections 245D.21 – 245D.22; and 245D.27 to 245D.31) licensed by DHS