



SSIS Fiscal Flyer

Winging Toward Integration

Issue 51

Social Services Information System

November 14, 2007

[Click here for the SSIS Fiscal home page on CountyLink](#)

Prepare now for CW-TCM claiming

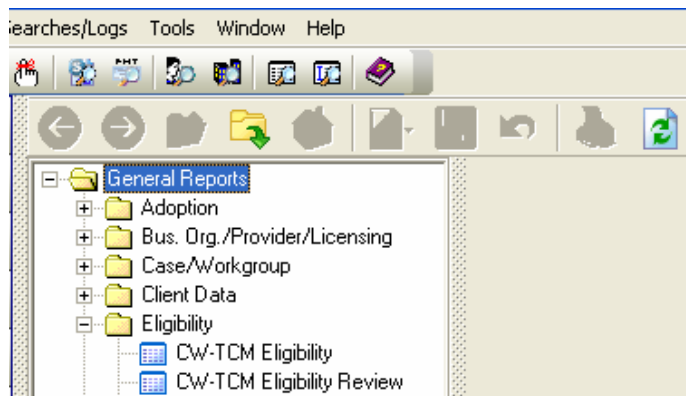
The CW-TCM package release will be distributed statewide in December 2007. Here are things to do in preparation for claiming CW-TCM through SSIS.

Admin:

- Enter Staff Provided Rates
CW-TCM, face-to-face T2023 U3
CW-TCM, telephone T2023 U3, U4
- Enter Staff Claim Qualifications

Worker/Fiscal:

- Enter CW-TCM Supplemental Eligibility
Clients must have a valid CW-TCM supplemental eligibility record
- Run CW-TCM Eligibility Review Report
In addition to the original determination of eligibility, a review must be documented annually. This report will list clients in need of a review for the time period selected.



****Best Practice** – if you are no longer providing CW-TCM services, close the supplemental eligibility record by entering an Eligibility End Date.

Run a report from CSIS or your legacy system of clients that are eligible for claiming. Verify that they are eligible (included in the CW-TCM Eligibility Report) and have up-to-date reviews (are not listed on the CW-TCM Eligibility Review Report).

January VPC scheduled for mentors

The December 4th (Worker) and 5th (Fiscal) mentor meetings have been postponed.

There will be full-day VPC meetings on January 28 for Worker mentors and January 29 for Fiscal mentors.

Claiming categories implemented and scheduled

Several CSIS counties have not submitted any claims through SSIS for claim categories that are no longer submittable through CSIS. The following claim categories are currently available in SSIS:

- RSC (Relocation Services Coordination)
- VA/DD TCM (Vulnerable Adult/ Developmentally Disabled Targeted Case Management)
- Waiver and AC

In addition, counties received RA (Remittance Advice) capability in the statewide release distributed on Tuesday, November 6 - the Paid, Partially Paid or Denied status will display on the Claim Detail screen for each claim submitted through SSIS.

Future claim categories and statewide implementation dates are:

CW/TCM - December 2007

LTCC and MH/TCM

- in V5.0, scheduled for January 2008

Rule 5 - February 2008

Replacement/Resubmission

- in V5.1, scheduled for Spring 2008

IV-E Abstract Report instructions

If a group facility license effective date ends before or during the service dates of your payment, proofing throughout the quarter will generate message 1036 - *"The license number does not match the license number in the IV-E rate table."* Once the new DHS Bulletin with the updated license effective dates is received at the end of the quarter, this error message will resolve itself for any facilities with updated dates.

Do your other proofing for the IV-E report. These dates will not affect the placement or client errors that can be corrected before the end of the quarter.

Example:

Rate Group	DHS Licen...	Facility	County/City
Group 4 - Rule 4 - Child Placing Age...	801978	PATH-Alternative to Residential	WRIGHT

Bulletin Effective Date	Bulletin Expiration Date		
04/01/2007	06/30/2007		
Group			
Group 4 - Rule 4 - Child Placing Agencies			
Facility			
PATH-Alternative to Residential			
County/City			
WRIGHT			
Rule	DHS License/IV-E Automation #	IV-E Sub Code	Approved IV-E Mtn %
4	801978	C	0
Approved IV-E Trng %	Approved per Diem	Approved IV-E Intake / Plan %	Approved MA %
1.5	\$47.88	88.63	0
Effective From	Effective To	MA Provider #	Contract / License
01/01/2007	09/30/2007	N/A	1/1/2007 - 12/31/2007
Expiration Reason			

Your Rule 4 payment to Path – Alternative to Residential for service dates 10-1-07 to 10-31-07 with a warrant/effective date of 11/05/07 will return a 1036 error if you run your proofing report on 11/15/07, along with any other proofing errors. After the IV-E facility Bulletin is issued at the end of December, this error will go away if the effective dates for PATH are updated.

Workaround for TCM CSR Rejected Time Report

The database package release sent to counties on November 6 has a bug that prevents counties from getting results on Rejected Time Report if the TCM CSR report has not been generated.

Note: It may look as if the search ran and you have no messages. Unfortunately, that is probably not accurate.

Workaround for this bug: Generate the TCM CSR report for the quarter first, then check the appropriate check boxes and click Search on the Rejected Time Report to see messages. If you exit SSIS, you'll need to regenerate the TCM CSR again in order to see Rejected Time messages.

This bug will be fixed in the Version 4.4 CW/TCM release scheduled for December 2007.

SSIS pilots continue

The CW-TCM claiming pilot kicked off on November 8, piloted by Carver, Itasca, Scott, and Washington Counties. SSIS truly appreciates the effort of each county as they bring different perspectives to the pilot. Carver and Washington have been piloting SSIS Fiscal for nearly two years. Wow!

Scott and Washington will pilot the upcoming Version 5.0. Hennepin County joins the pilot after approximately four weeks. Version 5.0 will include the new Vulnerable Adult/Common Entry Point functionality and Statewide Case Access, plus LTCC and MH/TCM claiming categories.

SSIS Frequently-Called Phone Numbers

Main Line 651-431-4800

Help Line 651-431-4801

Fax 651-431-7521

ssishelp@state.mn.us