


Presenter: Rebecca Wilcox



Minnesota Department of Human Services

**Family Safety Plan**  
Version 11.3

Worker Mentor Meeting  
August 22, 2011

---

---

---

---


---

---

---

---

### Why



- ▶ Addresses specific areas related to safety concerns
- ▶ Assists workers in helping families develop a safety plan
- ▶ Used at the discretion of the worker
- ▶ Not mandated by statute, though some agencies may require with some or all families

▶ 2 SSIS Worker Mentor Meeting 8/22/2011

---

---

---

---

---


---

---

---

### Who

- ▶ Family developed and driven



▶ 3 SSIS Worker Mentor Meeting 8/22/2011

---

---

---

---

---

---

---

---

### When

- ▶ Safety risk present
- ▶ During assessment phase
- ▶ To supplement a service plan in cases that transition to case management



▶ 4 SSIS Worker Mentor Meeting 8/22/2011

---

---

---

---

---

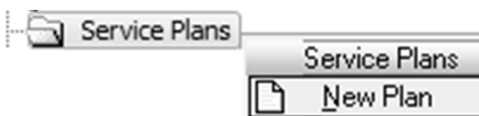
---

---

---

### Where

#### Service Plans



▶ 5 SSIS Worker Mentor Meeting 8/22/2011

---

---

---

---

---

---

---

---

### Template Search



Use Template Search to select Family Safety Plan.



▶ 6 SSIS Worker Mentor Meeting 8/22/2011

---

---

---

---

---

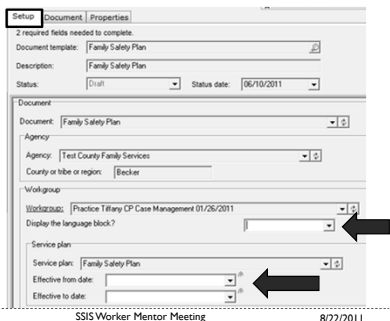
---

---

---

### Setup Tab

Enter language block display and Effective from and Effective to dates to view Family Safety Plan.



---

---

---

---

---

---

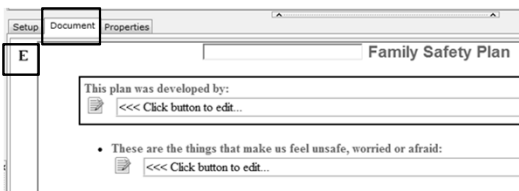
---

---

---

---

### Document Tab



Use Document tab to view and edit plan.

---

---

---

---

---

---

---

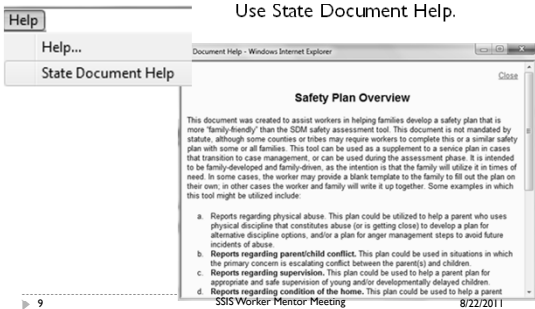
---

---

---

### State Document Help

Use State Document Help.



---

---

---

---

---

---

---

---

---

---

### Use Context-Sensitive Help

This plan was developed by:

Access for definitions in each section

10 SSIS Worker Mentor Meeting 8/22/2011

---

---

---

---

---

---

---

---

### Context-Sensitive Help

Document Help - Windows Internet Explorer

This plan was developed by:

Enter names of all who participated in developing this plan including family members, social worker, FGDM team members, therapist, etc.

Close

Definitions are used to assist workers.

11 SSIS Worker Mentor Meeting 8/22/2011

---

---

---

---

---

---

---

---

### Print Blank Copy

Print Preview - Family Safety Plan

100%

Family Safety Plan

This plan was developed by:

- These are the things that make us feel unsafe, worried or afraid:
- This is what our family is doing already to make sure we stay safe (the good things we do for ourselves and each other):

12 SSIS Worker Mentor Meeting 8/22/2011

---

---

---

---

---

---

---

---

## Complete Entry after Family Meeting

Practice	Family Safety Plan
This plan was developed by: <input type="checkbox"/> Arianna, Tiffany, Jack, Andrew	
<ul style="list-style-type: none"><li>• These are the things that make us feel unsafe, worried or afraid: <input type="checkbox"/> Arianna is worried that when she gets stressed out with Tiffany she will hit her. We feel unsafe when Jack is drinking because he calls Tiffany and Andrew bad names.</li><li>• This is what our family is doing already to make sure we stay safe (the good things we do for ourselves and each other): <input type="checkbox"/> Arianna takes a break from Tiffany when she starts feeling stressed out. Arianna takes the children to the park to play. Jack has been working with his probation officer.</li></ul>	

Entry into SSIS helps others access the plan.

---

---

---

---

---

---

---

---