

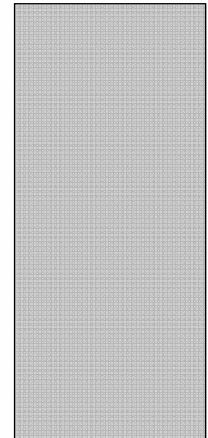


Minnesota Department of **Human Services**

Presenter: Rebecca Wilcox

# CHILD WELFARE FOUNDATION TRAINING

CHILD WELFARE TRAINING UNIT



# WHAT IS CHILD WELFARE FOUNDATION TRAINING?

- Replaces Social Worker CORE training
- Integrates 17-day CORE series with 3-day SSIS New Worker Training
- Significant use of Web-Based Training (WBT)
- Reduced classroom time = 11 days

# CWFT

# WHY REPLACE CORE TRAINING?

- To combine policy and SSIS training
- Reduce the number of classroom days
- Include the latest in child welfare practice reforms philosophies
- Include supervisory element
- Better prepared staff



# HOW WILL CORE BE PHASED OUT?

- CWFT pilot is January-September 2011
- Phase out to begin during CWFT pilot
- Current CORE participants required to complete series
- New Child Protection (CP) staff to sign up for CWFT

# WHO ATTENDS CWFT?

- New CP workers

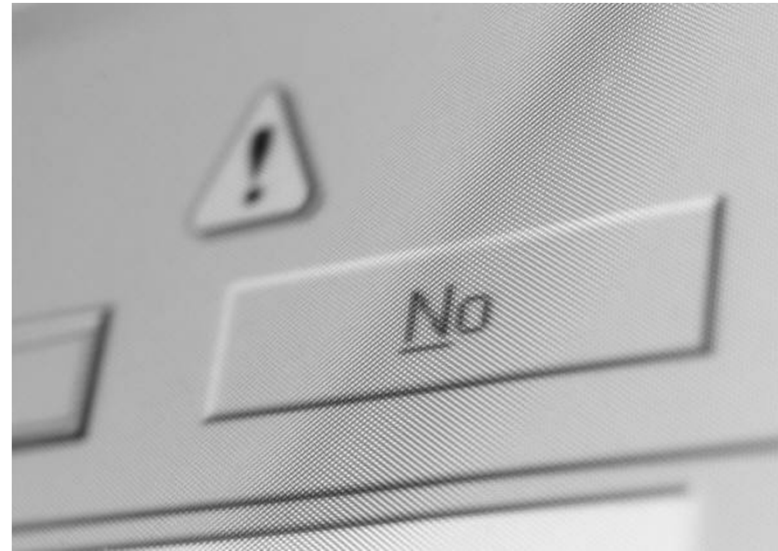
CWFT meets statutory criteria for training new CP workers

# MINNESOTA STATUTE 626.559

Subdivision 1a. **Child protection worker foundation education.** Any individual who seeks employment as a child protection worker after the commissioner of human services has implemented the foundation training program developed under section 626.5591, subdivision 2, must complete competency-based foundation training during the first six months of employment as a child protection worker.

# DO WORKERS ATTEND CWFT AND NWT?

- No. Workers do not have to attend both
- Workers receive similar SSIS instruction
- CWFT is more specific to CP entry



## WILL THERE BE CHANGES TO SSIS NWT?

- Yes, in the future
- Include significant WBT component
- Changes to classroom learning based on WBT's
- Eventually named Fundamentals of SSIS

# NEW WORKER TRAINING?

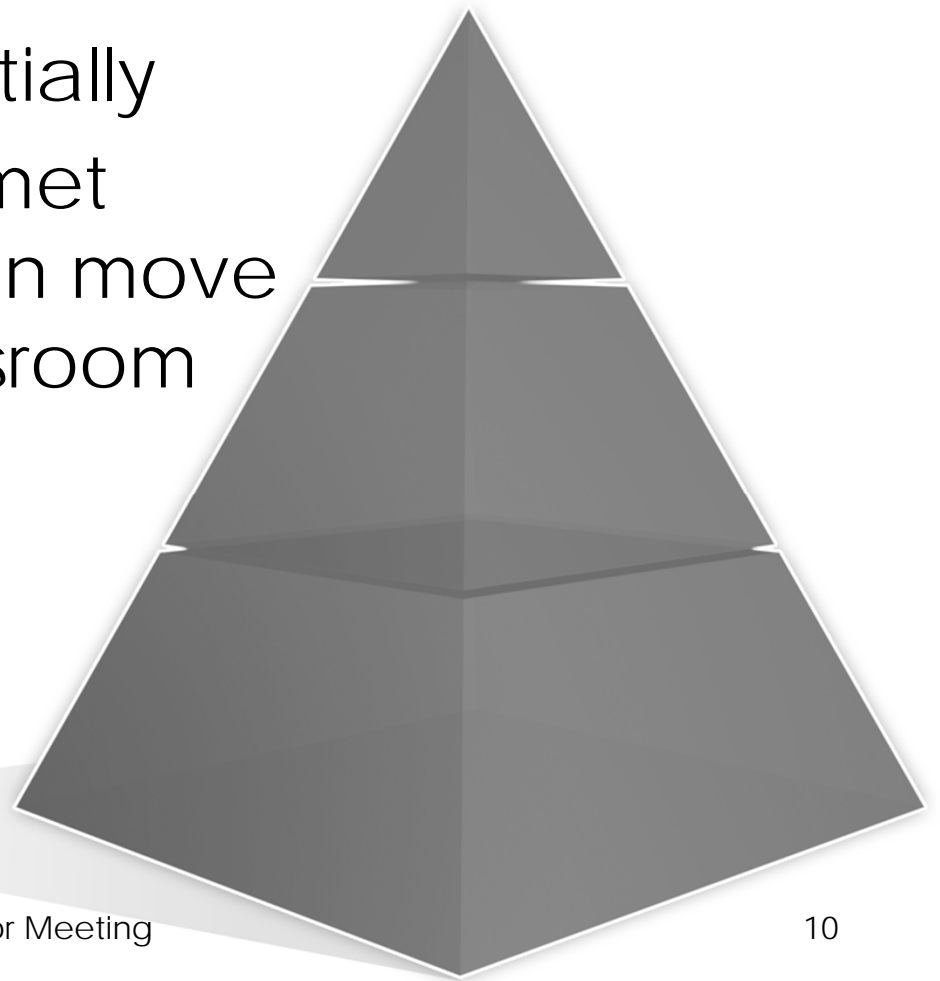
# WILL THERE STILL BE A CP DAY IN NWT?

- Until pilot is complete, CP Day will continue to be an option
- Further analysis needed regarding ongoing scheduling



# HOW IS TRAINING STRUCTURED?

- Must be taken sequentially
- Prerequisites must be met before participants can move on to next WBT or classroom module



# CWFT STRUCTURE - SECTION 1

Module	Title/Topic
WBT 1	CWFT & Minnesota Child Welfare Practice Model
WBT 2	SSIS Fundamentals: General Navigation, Staff Activity*
WBT 3	Child Welfare: Government, History & Roles
WBT 4	Legal Foundations of Child Welfare
WBT 5	Culture, Communication, Ethics & Family Engagement
WBT 6	Family Systems, Child Development & Child Maltreatment

# CWFT STRUCTURE - SECTION 2

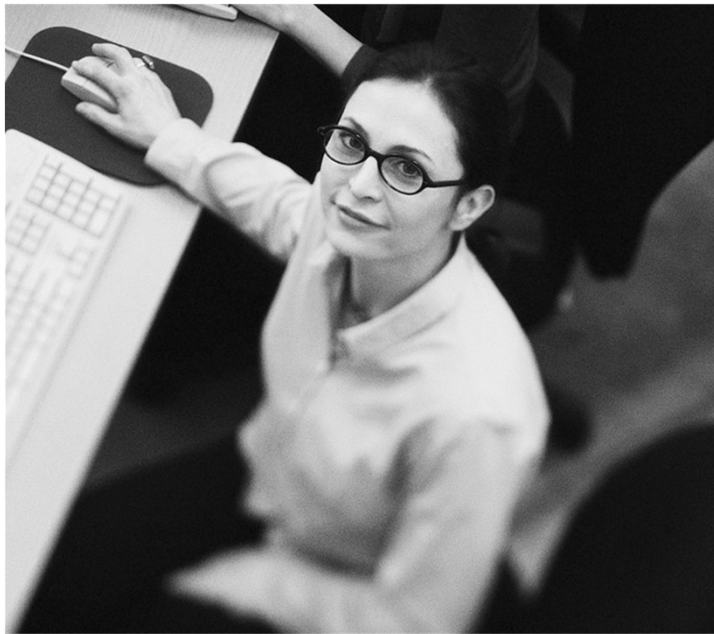
Module	Title/Topic
Classroom Module 1	Introduction to Minnesota Public Child Welfare Practice
WBT 7	Intake & Screening, Initial Assessment & Court
WBT 8	SSIS Fundamentals: Search Capacities*, Collaterals*
WBT 9	Worker Well-Being
WBT 10	Legal Foundations of Child Welfare
Classroom Module 2	Family Assessment & Case Work

## CWFT STRUCTURE - SECTION 3

Module	Title/Topic
WBT 11	American Indian Child Welfare Practice
WBT 12	Service Planning, Placement, Permanency & Service Provision Tips
WBT 13	SSIS Fundamentals: Placement*, General Reports* & Enhanced Grids*
Classroom Module 3	Family Investigation & Case Work

\* In progress, not yet complete

# WHAT IS WEB-BASED TRAINING?



- Provides overview and awareness of materials
- Lays the foundation prior to classroom learning
- Participants create training binders from WBT handouts for use in classroom training and on the job

# WHAT AGENCY PREPARATION IS NEEDED TO ENSURE WORKERS CAN USE WBT?

- Operating video and audio card
- Access to printing
- Headphone for workers accessing WBT's in shared space
- Technical support
- Latest version of Internet Explorer

# WHAT IS CLASSROOM TRAINING?

- Focus on skill development and application
- Policy and hands-on SSIS training
- Classroom Modules 2 & 3 use a “life of a case” model



# WHAT ARE SUPERVISOR RESOURCE PAGES?

- Developed for each WBT and classroom module, providing an overview of the content of training.
- Supervisor resource pages:
  - Offer tips that help guide workers in their learning
  - Provide topics, activities, and questions for consultation
  - Identify related resource topics.



# WHAT HAPPENS IF WORKERS ARE UNABLE TO MAKE A PARTICULAR CWFT CLASSROOM MODULE?

- Make every effort to attend each and every day
- Participants will not receive credit if more than 30 minutes of a classroom module is missed
- If entire classroom module is missed, participants must wait until next series AND retake WBT series

# HOW AND WHERE WILL CWFT BE SCHEDULED?

- Frequency of scheduling determined after pilot
- Participants can start WBT's immediately after receiving a unique key
- Held at sites with SSIS access



# HOW WILL PARTICIPANTS BE NOTIFIED OF CWFT?



- Training announcement sent to child welfare training list serve
- SSIS coordinators, mentors, and alternates were added to the list serve
- Recipients share with other staff

# HOW WILL PARTICIPANTS REGISTER?

- Registration through TrainLink
- Unique key required

The screenshot displays the Minnesota Department of Human Services CountyLink website. The header includes the department logo and name, along with the CountyLink logo. A navigation bar contains links for CountyLink Home Page, DHS Home Page, Bulletins, eDocs, and A-Z Topics. Below this is a menu with categories: County Reports/Results, DHS Program Resources, DHS Systems & IT Updates, Fiscal Reporting & Accounting, and Man. The main content area is titled 'Unique Key Request Form' and includes a note to check the Unique Key Search before submitting. The form section is titled 'Unique Key Request Person Data' and contains a note that required fields are marked with asterisks. The form fields include: 'Type of Request' (a dropdown menu with 'Choose Type' selected), 'If Known, County X1 number or Unique Key' (a text input field), 'Last Name\*' (a text input field), and 'First Name\*' (a text input field).

# QUESTIONS?

Email  
**[dhs.cwft@state.mn.us](mailto:dhs.cwft@state.mn.us)**

