

Presenter: Nan Beman



# **PLACEMENT STABILITY AND RE-ENTRY**

**Minnesota Needs To Improve**

# WHAT DOES OUR PLACEMENT STABILITY LOOK LIKE?

Federal FY 2008	Federal FY 2009	Federal FY 2010
84.6%	83.8%	85.2%
54.3%	58.4%	60%
29.2%	28.5%	30%

# HOW DO WE COMPARE TO OTHER STATES?

- Wisconsin

	Minnesota	Wisconsin
Score	91.6	100.6
C4.1: Of all children served in foster care during the year who were in care for at least 8 days but less than 12 months, what percentage had two or fewer placement settings?	83.8	85.4
C4.2: Of all children served in foster care during the year who were in care for at least 12 months, what percentage had two or fewer placement settings?	58.3	64.7
C4.3: Of all children served in foster care during the year who were in care for at least 24 months, what percentage had two or fewer placement settings?	28.5	41.2

# ILLINOIS

- Long term placements look much better in Illinois than in Minnesota

	Illinois	Minnesota
Score	97.2	91.6
C4.1: Of all children served in foster care during the year who were in care for at least 8 days but less than 12 months, what percentage had two or fewer placement settings?	81.0	83.8
C4.2: Of all children served in foster care during the year who were in care for at least 12 months, what percentage had two or fewer placement settings?	69.0	58.3
C4.3: Of all children served in foster care during the year who were in care for at least 24 months, what percentage had two or fewer placement settings?	42.8	28.5

# MICHIGAN

- Michigan does considerably better than Minnesota in all time frames.

	Michigan	Minnesota
Score	106.6	91.6
C4.1: Of all children served in foster care during the year who were in care for at least 8 days but less than 12 months, what percentage had two or fewer placement settings?	85.6	83.8
C4.2: Of all children served in foster care during the year who were in care for at least 12 months, what percentage had two or fewer placement settings?	73.0	58.3
C4.3: Of all children served in foster care during the year who were in care for at least 24 months, what percentage had two or fewer placement settings?	48.3	28.5

# FLORIDA

- Florida shows some better numbers than Minnesota

	Florida	Minnesota
Score	93.3	91.6
C4.1: Of all children served in foster care during the year who were in care for at least 8 days but less than 12 months, what percentage had two or fewer placement settings?	84.7	83.8
C4.2: Of all children served in foster care during the year who were in care for at least 12 months, what percentage had two or fewer placement settings?	60.9	58.3
C4.3: Of all children served in foster care during the year who were in care for at least 24 months, what percentage had two or fewer placement settings?	30.6	28.5

# WHAT SHOULD WE BE LOOKING AT?

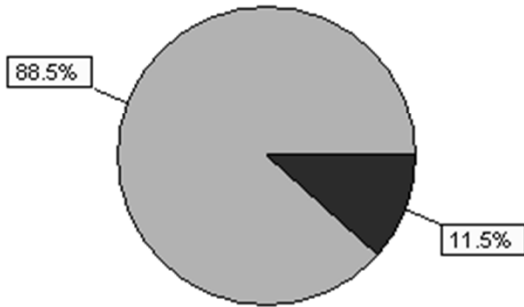
- Charting and Analysis for your agency
  - Federal Indicators Round 2
    - C4.1 Of all children served in foster care during the 12-month target period who were in foster care for at least eight days but fewer than 12 months, what percent had two or fewer placement settings?
    - C4.2 Of all children served in foster care during the 12-month target period who were in foster care for at least 12 months but less than 24 months, what percent had two or fewer placement settings?
    - C4.3 Of all children served in foster care during the 12-month target period who were in foster care for at least 24 months, what percent had two or fewer placement settings?

From: 01/01/2010 To: 12/31/2010 Category: Filter:

C4.1: Of all children served in foster care during the 12 month target period who were in foster care for at least eight days but less than 12 months, what percent had two or fewer placement settings?

Placement Stability - Less than 12 Months  
(Federal Measure C4.1)

<= 2 settings 88.5 %  
 > 2 settings 11.5 %



Category	Frequency	Percentage
<= 2 settings	546	88.5
> 2 settings	71	11.5
<b>Total</b>	<b>617</b>	<b>100 %</b>

Children whose first and only placement setting is "Juvenile correctional facility (locked)" are excluded from this measure because they will not be reported to AFCARS until they have another setting that is not in a locked facility."

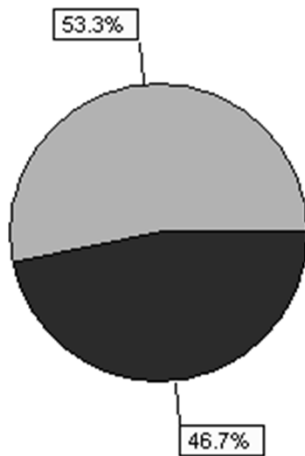
08/22/2014 SSIS Worker Mentor Meeting

From: 01/01/2010 To: 12/31/2010 Category: Filter:

C4.2: Of all children served in foster care during the 12 month target period who were in foster care for at least 12 months but less than 24 months, what percent had two or fewer placement settings?

Placement Stability - Between 12 and 24 Months  
(Federal Measure C4.2)

<= 2 settings 53.3 %  
 > 2 settings 46.7 %



Category	Frequency	Percentage
<= 2 settings	80	53.3
> 2 settings	70	46.7
<b>Total</b>	<b>150</b>	<b>100 %</b>

Children whose first and only placement setting is "Juvenile correctional facility (locked)" are excluded from this measure because they will not be reported to AFCARS until they have another setting that is not in a locked facility."

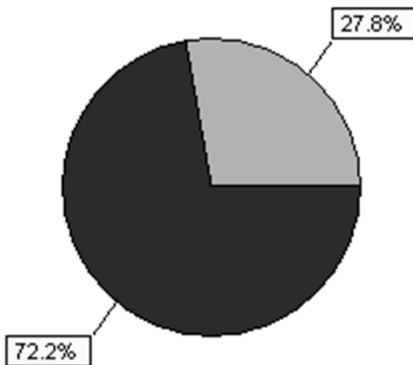
08/22/2011 SSIS Worker Mentor Meeting

From: 01/01/2010 To: 12/31/2010 Category: Filter:

C4.3: Of all children served in foster care during the 12 month target period who were in foster care for at least 24 months, what percent had two or fewer placement settings?

Placement Stability - 24 Months or Longer  
(Federal Measure C4.3)

<= 2 settings 27.8 %  
 > 2 settings 72.2 %



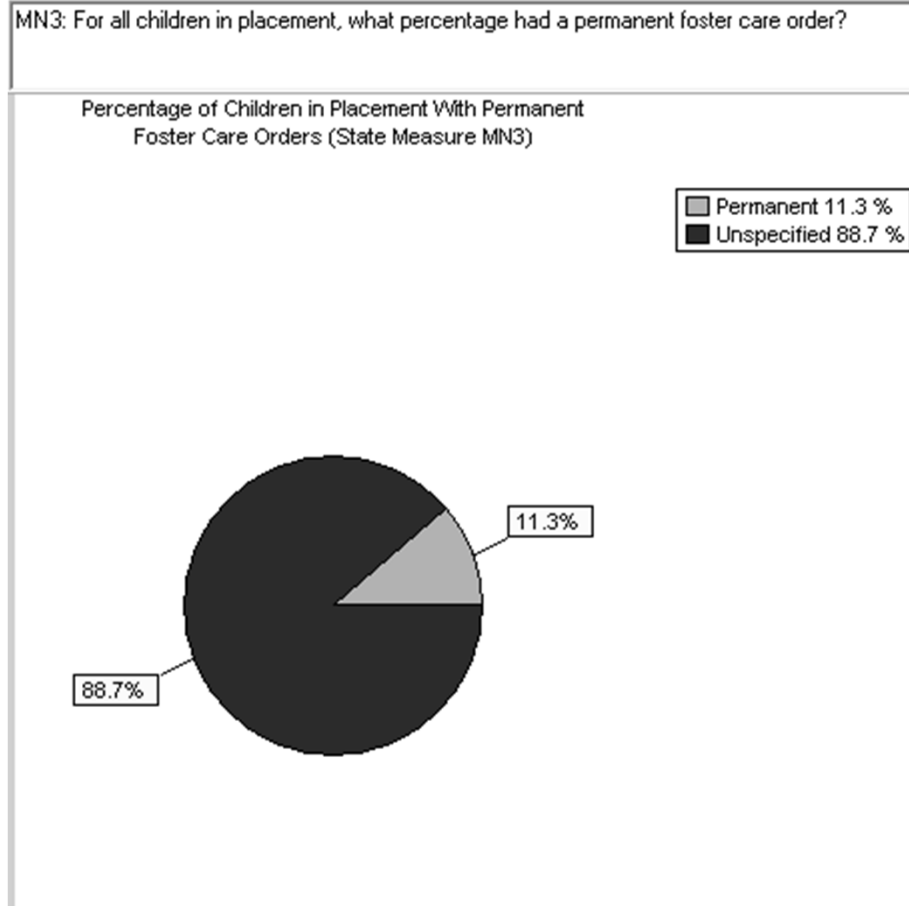
Category	Frequency	Percentage
<= 2 settings	73	27.8
> 2 settings	190	72.2
<b>Total</b>	<b>263</b>	<b>100 %</b>

Children whose first and only placement setting is "Juvenile correctional facility (locked)" are excluded from this measure because they will not be reported to AFCARS until they have another setting that is not in a locked facility."

# WHAT COMES NEXT?

- Reviewing the charts is the start.
- Analysis and discussion follows:
  - What are the barriers to long term stability?
  - What has worked in the past for those children who are stable?
  - Are placements made with relatives?
  - What supports might help with placement stability?
  - Are there children for whom we can find permanency?

# LONG TERM FOSTER CARE IS NOT TRULY PERMANENCY



# MINNESOTA'S PERFORMANCE FOR RE-ENTRY

C1.4: Of all children discharged from foster care to reunification in the 12-month period prior to the year shown, what percentage reentered care in less than 12 months from the date of discharge?	26.5	26.1	26.5	24.2
--	------	------	------	------

- In 2010 our re-entry rate was 24.5%. Our improvement since 2006 has been slight and unreliable.
- Georgia has put a huge emphasis on examining the data routinely and evaluating outcomes. Their re-entry rate is currently 3.5%.
- Georgia has 9,967 kids in care versus our 5,756. Their median length of stay is 15.6 months while ours is 11.7 months.

## A FEW COMPARISONS

### ○ Minnesota and Wisconsin

C1.4: Of all children discharged from foster care to reunification in the 12-month period prior to the year shown, what percentage reentered care in less than 12 months from the date of discharge?	24.2	18.8
--	------	------

### ○ Illinois and Minnesota

C1.4: Of all children discharged from foster care to reunification in the 12-month period prior to the year shown, what percentage reentered care in less than 12 months from the date of discharge?	11.0	24.2
--	------	------

### ○ Florida and Minnesota

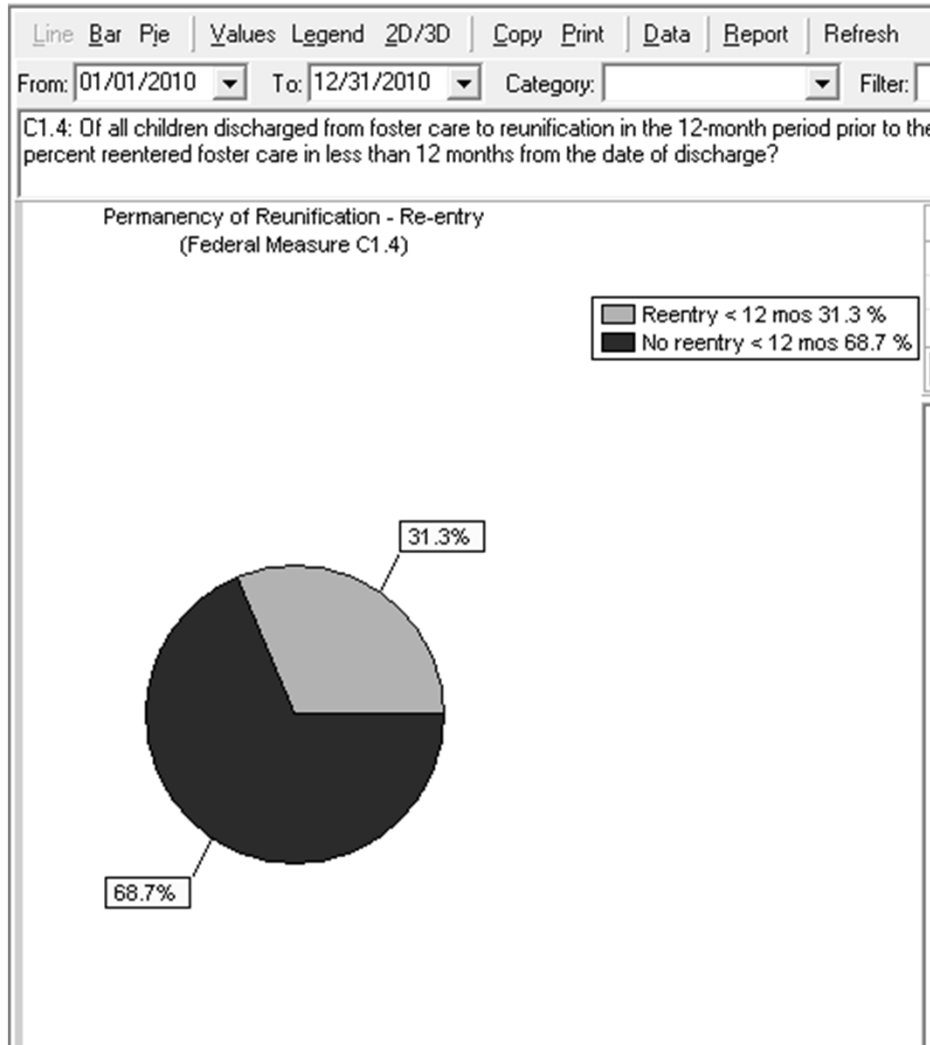
C1.4: Of all children discharged from foster care to reunification in the 12-month period prior to the year shown, what percentage reentered care in less than 12 months from the date of discharge?	15.1	24.2
--	------	------

# WHAT SHOULD WE BE LOOKING AT?

- Charting and Analysis

- Federal Indicators Round 2

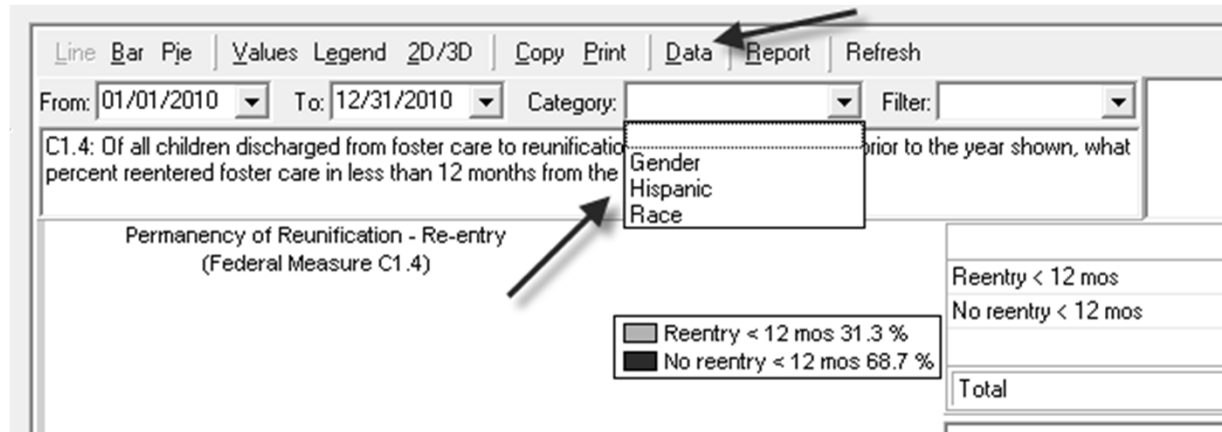
- C1.4: Of all children discharged from foster care to reunification in the 12-month period prior to the year shown, what percent reentered foster care in less than 12 months from the date of discharge?



## ANALYSIS AND BRAINSTORMING

- Who are the children re-entering in your agency?  
Who are not?
- What forces are at work to prevent re-entry in those non-re-entry cases?
- Might any of the identified strengths in non-re-entry cases support new placements as they are made?

# NAMES, CATEGORIES AND FILTERS ARE AVAILABLE



- To view actual case names, click on Data and refresh.
- Does gender or race make a difference in your agency to re-entry?

# CONSULTATION IS AVAILABLE

Contact **Nan Beman**

(651)431-4767

[nan.beman@state.mn.us](mailto:nan.beman@state.mn.us)

We can review the data in your agency and consider how to analyze the information.