

Presenters: Lily Lasker & Lisa Litchfield

Tableviewer

SSIS Worker Mentor Meeting
August 21, 2012

SSIS Table Viewer 12.2.3.7

File Help

TransIn Table | TransOut Table | TransLog Table | SSIS Tables

WG_ID	UNIT_ID	FOLDER_ID	WG_LABEL	START_DT	SUBPF
115145540	84902348	115145539	Scovil Betty Sue CP Case Management 09/20/2004	9/20/2004	911
123250113	101646003	123250115	Cw Intake 03/12/2007	3/12/2007 2:53:00 PM	911
150841471	86807370	150841470	Columbine Cora APS Case Management 03/20/2007	3/20/2007	911
115127250	102182269	115127249	Intake workgroup Intake 09/20/2004	9/20/2004 11:30:30 AM	911
115127302	102182269	115127301	Bear J Family CP Assessment 09/15/2004	9/15/2004 11:44:00 AM	911
150841476	86807376	150841475	Begonia Mommy CMH Assessment 03/20/2007	3/20/2007	911
118858326	801634	118858328	EW Intake 04/02/2007	4/2/2007 1:58:00 PM	911
115127493	102182269	115127492	Bear Beyle CP Assessment 09/10/2004	9/10/2004	911
133262710	115208022	133262712	Disney Land AMH Intake 04/27/2007	4/27/2007 1:53:00 PM	911
115127685	102182269	115127684	Intake workgroup Intake 09/23/2004	9/23/2004 8:48:13 AM	911
115127689	102182269	115127688	Intake workgroup Intake 09/13/2004	9/13/2004 8:48:58 AM	911
114647088	101638034	100117293	Smith Kidthree M EID Case Management 09/24/2004	9/24/2004	911
115154325	84902348	115145539	Scovil Robert William CP Case Management 09/24/2004	9/24/2004	911
150852068	118632047	150852070	Intake 04/02/2007	4/2/2007 12:30:00 PM	911

WG_ID: 115145540 UNIT_ID: 84902348 FOLDER_ID: 115145539 WG_LABEL: Scovil Betty Sue CP Case Management 09/20/2004

SUBPROG_ID: 91152125 END_DT: CNTY_CASE_NUM: 877888 APP_STATUS_CD: APP_COMPL_DT:

SPECIAL_STUDIES_CD: REASON_ENDED_CD: DESTRUCTION_DT: READ_RESTRICT_CD: 4 CURR_STATUS_CD: 1 ASSIGNED_IND: Y WG_TYPE_CD: 2

WG_DESC: Scovil Betty Sue CNTY_DESTDT_MOD_IND: N LAST_CHGD_BY: 1 LAST_CHGD_DT: 05/19/2008 3:39:06 PM

Table: WORK_GROUP - 400 Table list sort order: By table name By trans code Old order

SSIS Worker Mentor Meeting - August 21, 2012

Refresh All records Start date: End date:

What is Tableviewer?

- * It can be a tool to assist with issues regarding data entered in SSIS, in essence table records.
- * SSIS is a relational database. This means each table relates to one or more tables within the database.
- * Number of SSIS Tables = 379
- * What is a table? Basically, in computer programming, a **table** is a data structure used to organize information, just as it is on paper.
- * For example, the Person table, the Time Record table, and the Workgroup table are frequently referenced/updated in daily SSIS work.

SSIS Worker Mentor Meeting - August 21, 2012

3

What is Tableviewer?

- * Tables contain records. And each record has a specific set of defined fields.
- * A **field** is an area in a fixed or known location in a unit of data such as a record, message header, or computer instruction.
- * Each table record has a unique system generated identifier. An example is for a staff table, each staff member has their own unique staff ID number (similar to a person's SSN)
- * The unique identifier is usually the first field in a table.

SSIS Worker Mentor Meeting - August 21, 2012

4

How do you get Tableviewer?

- * Tableviewer has to be installed with your SSIS application.

Name	Date modified	Type	Size
Admin	6/17/2011 2:42 PM	Shortcut	3 KB
Charting	6/17/2011 2:42 PM	Shortcut	3 KB
Config Lite	6/17/2011 2:42 PM	Shortcut	2 KB
Push Pull	6/17/2011 2:42 PM	Shortcut	3 KB
Repository	6/17/2011 2:42 PM	Shortcut	3 KB
Table Viewer	6/17/2011 2:42 PM	Shortcut	3 KB
Worker	6/17/2011 2:42 PM	Shortcut	3 KB

- * It requires a full Client install or by adding Tableviewer to a custom install.

SSIS Worker Mentor Meeting - August 21, 2012

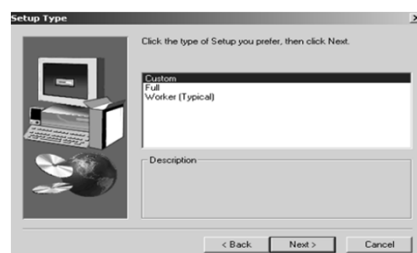
5

Important SSIS Database Reference Material

- * **“Install SSIS Client Components on a Workstation”**

SSIS resources > Support > System Docs > **Ref. #190**

http://www.dhs.state.mn.us/main/groups/county_access/documents/pub/dhs_id_007810.pdf



SSIS Worker Mentor Meeting - August 21, 2012

6

Important SSIS Database Reference Material, continued

V12.2 Database Layout

www.dhs.state.mn.us/main/groups/agencywide/documents/pub/dhs16_169833.pdf

- * Trans Code Field is the Table number
- * Each table has a unique Table Name. (It describes what data the table is collecting.)
- * Sequence is the order of the fields as they appear in the table.
- * Field ID is the unique ID number for the field name within each table.
- * Type is the field type whether it is numeric, variable characters (alpha-numeric), date fields, etc.

SSIS Worker Mentor Meeting - August 21, 2012

7

Important SSIS Database Reference Material, *continued*

- * Length notes the maximum amount of spaces allowed in a specific field.
- * Decimals indicates if the field contains decimals in a numeric type field.
- * Description field describes what information is being captured in a particular field.

SSIS Worker Mentor Meeting - August 21, 2012

8

Important SSIS Database Reference Material, *continued*

SSIS resources > Support > **Data Definitions:**

V12.3 to V12.2 Comparison

http://www.dhs.state.mn.us/main/groups/agencywide/documents/pub/dhs16_170649.pdf

SSIS compares database changes between prior releases and the current release.

What is a physical data model?

A physical data model can be thought of as a diagram or **flowchart** that illustrates the relationships between data. The relationships are the fields that link one table to another.

SSIS Physical Data Model:

- * **V12.1 Data Model – 42 pages** (3/12/12) is a detailed view of all of the SSIS tables and how they are linked.
http://www.dhs.state.mn.us/main/groups/agencywide/documents/pub/dhs16_167734.pdf
- * **V12.1 Data Model – 12 pages** (3/12/12) is a synopsis of the tables. It doesn't have the complete view of all the tables.
http://www.dhs.state.mn.us/main/groups/agencywide/documents/pub/dhs16_167735.pdf

Why do you need to know the background on Tableviewer?

We could not start talking about what you can do with Tableviewer until you understand the importance of the reference materials. Before you begin researching issues, gather the reference materials, obtain relevant data from SSIS Worker/Fiscal or SSIS Admin, and prepare to document required information as you navigate through the tables.

It takes time and patience, but can lead to needed results.

Why use Tableviewer?

- * Acquiring these tools is critical to researching issues such as these:
 - * The Tableviewer can tell you the last staff person who either added or changed a record in a specific table.
 - * Locate a workgroup or staff member associated with a special study.
 - * Find out who changed a time record.

What can't it do?

- * It will not tell you the exact content of what was changed.
- * Tableviewer is read-only. Nothing can be fixed here.
- * You cannot query data in Tableviewer; you can only look up data.
- * There are no enhanced grid features except for autofiltering.
- * No exporting data.

SSIS Worker Mentor Meeting - August 21, 2012

13

Worker Changes Person Data

Person data is changed. Who changed it?

- 1) Get the Person ID # of the record you are interested in from SSIS Worker.
- 2) Go to the V12. 2 Database Layout and look up the Person (500) table.
(*Hint: Look in the Trans Code column.*)
- 3) From the Person ID # column (*Hint: Field ID column is 625*), autofilter and select Custom.

SSIS Worker Mentor Meeting - August 21, 2012

14

Worker Changes Person Data, continued

- * Use the grid autofilter features to eliminate clutter and make for easier viewing of your selected record. In this instance, we want to limit it to one person record.

Custom Filter

Show rows where:

PERSON_ID
equals 198824952

AND OR

OK Cancel

SSIS Worker Mentor Meeting - August 21, 2012

15

SSIS Table Viewer 12.3.2.2

File Help

TransIn Table | TransOut Table | TransLog Table | SSIS Tables

PERSON_ID	BIRTH_DT	TITLE	FIRST_NAME	MIDDLE_NAME	LAST_NAME	NAME/PHONE_1	GE/SE	HIS/ONTY_PFR	DECEASED_DT	IVE C
198824952	07/01/1938		Morris	Albert	Mankato		M	2		2

(PERSON_ID = 198824952) Customize...

PERSON_ID: 198824952 BIRTH_DT: 07/01/1938 TITLE_OF_COURTESY: FRST_NAME: Morris MIDDLE_NAME: Albert LAST_NAME: Mankato NAME_SUFFIX:

PHONE_1: GENDER_CD: M SECURITY_EXCL_IND: HISPANIC_CD: 2 CNTY_PERSON_NUM: DECEASED_DT: VETERAN_IND: CLEARING_STATUS_CD: 2 SSN: PII:

MARITAL_STATUS_CD: LEGAL_STATUS_CD: SW_INDEX_ID: 36803174 PRIM_LANGUAGE_CD: ESTIMATED_BIRTH_DT: INTERPRETER_IND: ICWA_IND: CTZNSHIP_STATUS_CD: CTZNSHIP_VFCN_CD:

CTZNSHIP_VFCN_DT: CTZNSHIP_EFF_DT: BIRTH_ST_CD: BIRTH_CNTRY_CD: BIRTH_COUNTRY: LAST_CHGD_BY: 198558515

LAST_CHGD_DT: 08/02/2012 3:31:10 PM

SSIS Worker Mentor Meeting - August 21, 2012

16

SSIS Table Viewer 12.3.2.2

SOURCE_CD	TRANS_ID	SEQ_NUM	STAFF_ID	TRANS_DT	TRANS_CD	ACT_CD	PROCESSED_IND	ERR_CD
	9173429	1	19852615	8/22/2012 3:31:11 PM	500	N		

Annotations:

- Start here (points to TRANS_ID)
- this is the staff (points to STAFF_ID)
- 12.2 Database Layout Reference (points to TRANS_CD)
- A = add, C = change, D = delete (points to ACT_CD)

Go then to Field ID# 3341 = Hispanic code

look up (points to search input)

Field Name = Client Person ID# (points to search results)

Use this on SSIS Tables = Code (points to search results)

Enter the correct transaction date needed (points to 8/22/2012)

Check this (points to Retrieve record data)

What was changed?

- * In this example, a worker changed the Hispanic heritage indicator on the client's demographic screen in SSIS Worker/Fiscal.
- * The field name in Tableviewer is HISPANIC_CD.
- * The field only stores the numeric value.
To find out what the code value is (our example is 2), go to the Code Table.

SSIS Table Viewer 12.3.2.3

File Help

TransIn Table | TransOut Table | TransLog Table | SSIS Tables |

FIELDNAME	CODE	DESCRIPTION	SORT_ORDER	AC	LAST_CHGD	LAST_CHGD_DT
HISPANIC_CD	1	Yes	2	Y	217	5/6/2010 3:56:39 AM
HISPANIC_CD	2	No	1	Y	217	5/6/2010 3:56:39 AM
HISPANIC_CD	3	Unable to determine - abandoned child	4	Y	1	10/10/2011 8:49:07 AM
HISPANIC_CD	8	Declined	3	Y	1	9/13/2011 4:18:10 PM
HISPANIC_CD	9	Unknown	5	Y	1	9/13/2011 4:18:10 PM

(FIELDNAME = HISPANIC_CD)

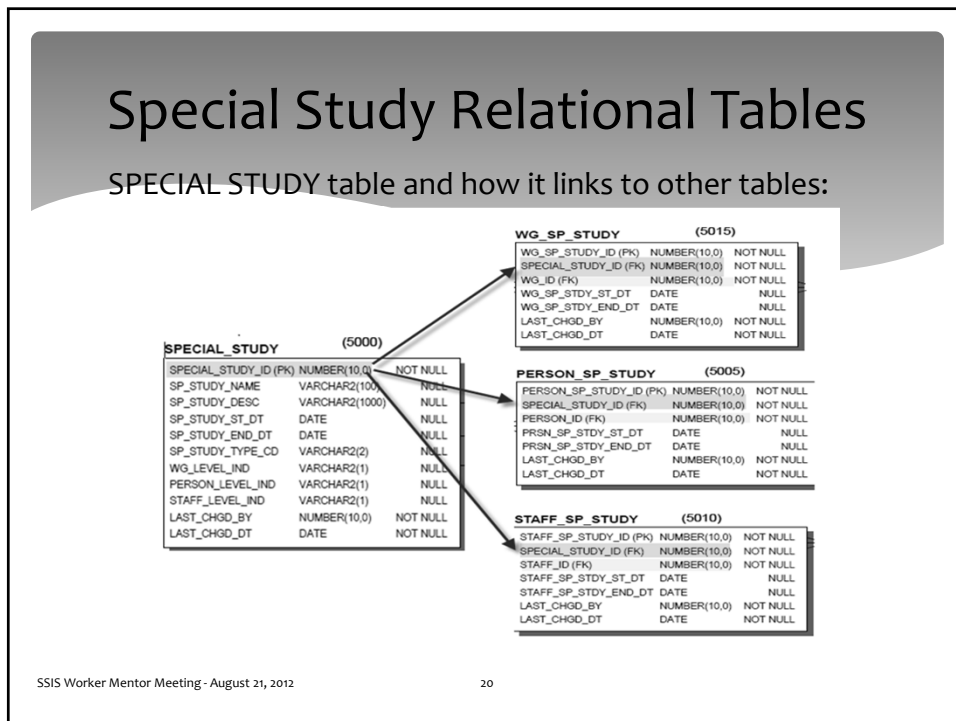
FIELDNAME: HISPANIC_CD CODE: 1 DESCRIPTION: Yes SORT_ORDER: 2 AC: Y

LAST_CHGD_DT: 05/06/2010 3:56:39 AM

Table: CODE - 1430 Table list sort order: By table name By trans code Old order

SSIS Worker Mentor Meeting - August 21, 2012

Refresh All records Start date: End date:



Data Needed in SSIS Worker

- * Time Record ID #
- * Staff ID #
- * Workgroup ID #

Skills not available through SSIS training or Help Line

- * Microsoft Access
- * Microsoft Excel
- * SQL Developer
- * Crystal Reports

Skill Development

- * Check local community college classes
- * Science Museum
- * Online computer courses
- * Resource books

SSIS Worker Mentor Meeting - August 21, 2012

25

Help Line Support

- * If you compile all of the necessary information through Tableviewer, Help Line staff may be able to assist with a history of adds, changes and deletes.
- * Tableviewer only provides most recent adds or changes to a record.

SSIS Worker Mentor Meeting - August 21, 2012

26

Questions?