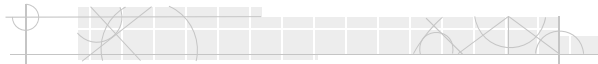



SSIS Technical Issues



SSIS 11.3 and After



Background on Release 11.3

General Tasks

- Custom modification to Delphi 7
- Data access differences - BDE to DBExpress
- Documents problems
- Dreamscripter
- SOAP and Web Servers
- Delphi 7 to Delphi 2009 standard component changes
- Developer Express component upgrade (grids & node containers)
- Internally-written component upgrades
 - Data access controls (TdoServer, TdoClient, Stored Procedure handling)
 - Visual controls

Third-party Component Upgrades

- Abbrevia zip/compression
- Addict3 spell checker
- Artemis action button
- DevEx grid and trees
- Dream Company scripting
- Extra report exporting
- FastMM memory management
- Rave5 code-based reports
- RBuilder banded reports
- Woll2Woll calendar
- Wptools documents

- Code Dictionary
- Adoption
- Worker
- Push/Pull
- Admin

- Charting
- Vendor
- Repository
- DEX
- Web/SOAP servers

Applications

- TableView
- Deans' Funky Table Viewer
- Server Monitor
- Shelly's Reporting Tool

- Datafix Tool
- Others?

Page 2

SSIS Worker Mentor Meeting

5/10/2013

Release 11.3 (cont.)

Migrate to Delphi 200X, the current version of Delphi:

- We currently use Delphi 7, which is quite old and has been de-supported by the vendor.

Eliminate the Pascal scripting engine used in the application, and replace scripting with compiled Delphi code

Stabilize our current feature set and code base:

- Eliminate unused program units

Upgrade all components used in the application:

- Conversion across the board to Quantum Grid 5
- Eliminate unused or duplicated components
- Remove obsolete components.
- Eliminate components with overlapping functionality (i.e., reporting components).

Release 11.3 (cont.)

- WP Tools upgrade
- Identify and convert non-Worker executables to the current version of Delphi
 - Repository upload programs
 - Database Code Explorer
 - Daily Build Report
 - Etc.
- About 1200 - 1500 screens with more than 80,000 GUI controls

Double Byte Character Set

- Single-byte to double-byte support in Delphi
- Required changes to internal code using pointers
- Doubled packet sizes to server

Workstation Recommendations

SSIS and MnCHOICES New Workstation Specifications

MnCHOICES Without SSIS	MnCHOICES and SSIS
Hardware i5-2400 Processor, 3.1 to 3.4 GHz 4 GB of RAM minimum 250 GB hard drive	Hardware i5-2400 Processor, 3.1 to 3.4 GHz 4 GB of RAM, 8 GB of RAM recommended ⁵ 250 GB hard drive Network card compatible with county's local area network topology Monitor 17" or 19" LCD or flat panel monitor Note: Fiscal users should have 19" monitors because of the large displays for fiscal functions.
Operating System Microsoft Windows 7 - 32 bit or 64 bit	Operating System Microsoft Windows 7 - 64 bit
Software Internet Explorer 7 or higher Silverlight version 5.1.1 or higher ³ Java Runtime version 6 or higher	Software Internet Explorer 7 or 8 Microsoft .NET Framework 4.0 Client Profile ⁴ Java Runtime version 6 or higher
Other High-speed Internet connection for initial setup	

[SSIS Workstation Recommendations Link](#)

Workstation Recommendations (cont.)

SSIS and MnCHOICES Existing Workstation Specifications

MnCHOICES Without SSIS	MnCHOICES and SSIS
<p>Hardware 2 GHz Processor 2 GB of RAM or 3 GB for 64-bit operating systems 16 GB available disk space</p> <p>Operating System Windows XP SP 3 for 32 bit systems Windows XP SP 2 for 64 bit systems Windows Vista SP 2 Microsoft Windows 7 - 32 bit or 64 bit Microsoft Windows 8</p> <p>Software Internet Explorer 7 or higher Silverlight version 5.1.1 or higher³ Java Runtime version 6 or higher</p> <p>Other High-speed Internet connection for initial setup</p>	<p>Hardware 2 GHz Processor 4 GB of RAM, 8 GB of RAM recommended⁵ 250 GB hard drive Network card compatible with county's local area network topology</p> <p>Monitor 17" or 19" LCD or flat panel monitor Note: Fiscal users should have 19" monitors because of the large displays for fiscal functions.</p> <p>Operating System Windows XP SP 3 for 32 bit systems Windows XP SP 2 for 64 bit systems Microsoft Windows 7 - 32 bit or 64 bit</p> <p>Software Internet Explorer 7 or 8 Microsoft .NET Framework 4.0 Client Profile⁴ Java Runtime version 6 or higher</p>

Workstation Cost w/8GB RAM

- DHS' internal hardware standard



HP Compaq Elite 8300

HP Compaq Elite 8300 SFF -Intel Core i5
-3470 3.20 GHz -iPro activated -AMT
8.0 -TPM chip Included -8GB DDR3 1600
MHz -250GB SATA 7200rpm hard drive -
CDRW/DVDRW drive -Small Form Factor -
-Three year next working day on site
warranty

Our Price: \$668.00

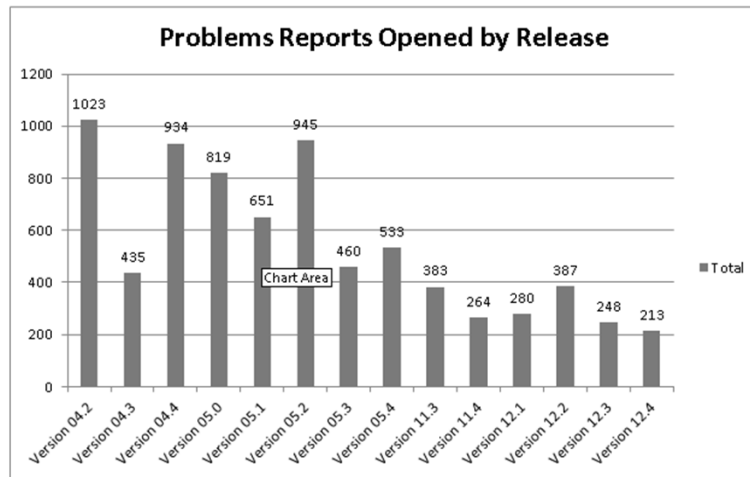
Part No: QV996AV-4

- List price \$668
- FFP Percent 40+ % (Federal Match)
- County cost \$400

Quality

- madExcept
- Developer code review
- Quarterly releases

Quarterly Releases & Quality



Report Problems to Help Line

