



---

---

---

---


---

---

---

---

### Objectives



**Participants will be able to:**

1. Describe the basic purpose and functions of MnCHOICES
2. Understand the launch plan
3. Discuss the MnCHOICES Mentor Role

MnCHOICES 1

---

---

---

---

---

---

---

---

## MnCHOICES

### Launch begins

**November 4, 2013**



MnCHOICES 2

---

---

---


---

---

---

---


---



### What is MnCHOICES?

**Process**

- A single, comprehensive, assessment and support planning process for people with long-term service and support needs
- Determines eligibility for programs and services
- Results in a support plan
- Used for all ages and disability types



3

---

---

---

---

---

---



---

---

### What is MnCHOICES?

**Tool**

- Web-based application with off-line capability
  - Internet **not** used to complete assessment
- Policy rule-based application aligns rules, regulations, statute, etc.
  - Determines eligibility

4

---

---

---

---

---

---

---

---

### Pre-MnCHOICES



5

---

---

---

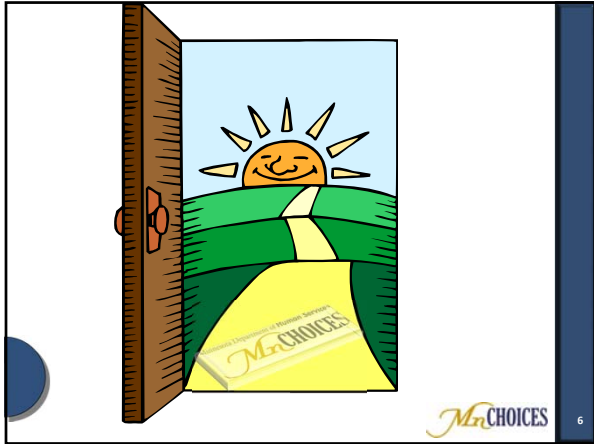
---

---

---

---

---




---

---

---

---

---

---

---

---

**Who can have a MnCHOICES assessment?**

(b) .... “The team is responsible for providing long-term care consultation services to **all persons located in the county** who request the services, regardless of eligibility for Minnesota health care programs.”

Statute 256B.0911 Subd. 3. Long-term care consultation team

---

---

---

---

---

---

---

---

**Who conducts a MnCHOICES Assessment?**

**Certified Assessors**

Must at a minimum have one of these:

- Bachelor’s degree in social work
- Bachelor’s degree in nursing with certificate in public health nursing
- Bachelor’s degree in a closely related field

At least 1 year home and community-based experience

---

---

---

---

---

---

---

---

# Who conducts a MnCHOICES Assessment?

Certified Assessors

Or, must be an:

Registered Nurse (RN)

- Bachelor's no PHN



– Closely related field.....

- Capped (3 year)

- Two-year

At least 2 years home and community-based experience



9

---

---

---

---

---

---

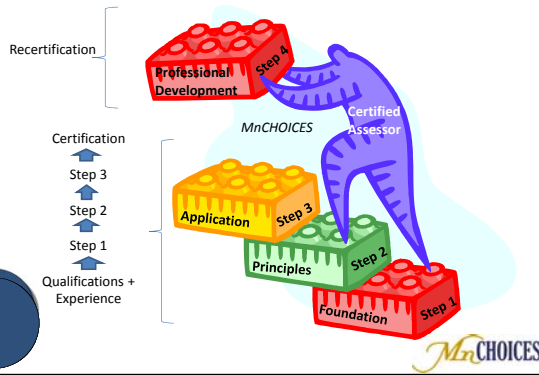
---

---

---

---

# MnCAT (Certified Assessor Training)



10

---

---

---

---

---

---

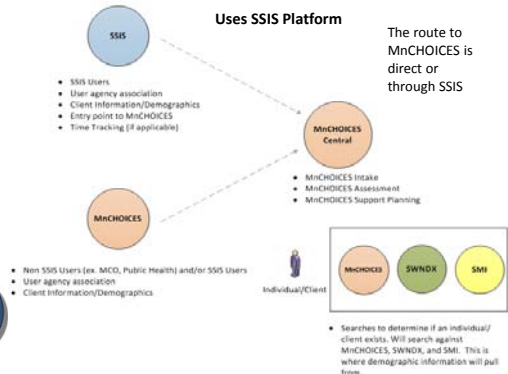
---

---

---

---

# SSIS and MnCHOICES Connection



11

---

---

---

---

---

---

---

---

---

---

### Important Event: Payment Methodology Changes for Counties & Tribes

- **October 1, 2013** - Random Moment Time Studies payment for counties and tribes starts
- Separates *administrative activities* from *service* of case management
- MnCHOICES assessment & support planning is administrative
- DHS Financial Operations Division will provide training and technical assistance
- Tuesday, August 27<sup>th</sup> SSTS am
- Tuesday, August 27<sup>th</sup> LCTS pm
- Monday, September 9<sup>th</sup> MATTS



12

---

---

---

---

---

---

---

---

---

---

### MnCHOICES Launch Strategy

LAUNCH	# Lead Agencies Per Launch Group
11/04/2013	2-3 FI
6-8 weeks later	2-3 FI
6-8 weeks later	2-3
3-4 weeks later	6-12
3-4 weeks later	6-12
3-4 weeks later	6-12
2-3 weeks later	12-18
2-3 weeks later	12-18
2-3 weeks later	12-18
6/03/2014	Any remaining

← Dakota, Ramsey, and White Earth Nation  
 ← Hennepin



13

---

---

---

---

---

---

---

---

---

---

### MnCHOICES Launch Strategy

- Begin with "new" assessments
  - Persons not currently on programs or receiving services for which MnCHOICES determines eligibility
- Transition in "reassessments"
  - Re-determine eligibility for persons currently on programs or receiving services for which MnCHOICES determines eligibility



14

---

---

---

---

---

---

---

---

---

---

### MnCHOICES Launch Preparation



- Internal beta 3 testing – August
- Announce presumptive launch groups – August
- Payment training - August and September
- External beta 3 testing – September
- Mentor training – November
- MnCHOICES launches - November



15

---

---

---

---

---

---

---

---

### MnCHOICES Mentors



- Lead agency principal contact and resource person
- Liaison for communication and training
- Supports agency's MnCHOICES users
- Troubleshoots policy and technology questions and issues



16

---

---

---

---

---

---

---

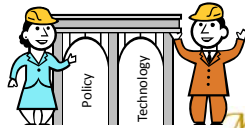
---



### MnCHOICES Mentors



- Primary functions:
  - Receive and share communications
  - Encourage and coach staff
  - Provide hands-on support
  - Help identify issues and problem solve



17

---

---

---

---

---

---

---

---

