

Minnesota Assessment of Parenting Children and Youth (MAPCY): 15.1 Updates

General MAPCY Changes

- Assessor can enter MAPCY without Placement (primarily for re-assessment of children post-permanency)
- The error messages when MAPCY is sent for agency approval have been updated
- Within each Minnesota Assessment of Parenting Children domain, a text box for documentation has been added to each child needs and parenting indicator section
- Within each MAPCY tool numbering has been corrected
- MAPCY approval menu – only those approval action items that pertain are enabled
 - Previously, all approval options were enabled and an error message was displayed if the Action menu function was not applicable.
- MAPCY notification letters have been updated
- MAPCY Rating Report: The MAPCY Rating Report has been updated, specifically the sections for the Document tab to include free text fields from each domain, Scoring grid changes, and the section “MAPCY Reassessment and Appeals”.

Changes on the MAPCY Grid View

- The label for the Final benefit level has been changed to **Standard+Extraordinary**.
- The field **Current Approved Level** was added to the grid view.

MAPCY Grid view> Standard+ Extraordinary and Current Approved Level fields

Bus Org/Provider	Effective Date	Status	Standard Benefit Level	Score	Agency Approval Date	Ex Level Status	Standard + Extraordinary	Current Approved Level
		Draft						
	01/13/2015	Draft						

Setup Document Scoring Properties Comments

No required fields needed to complete.

Changes on MAPCY Setup tab

- In the Setup tab, the Bus.Org address has been added to the Caregiver 1 address dropdown list.
- Two questions have been removed from the bottom of the Setup tab: “If MAPCY is for Adoption Assistance, what is the most recent supplemental level?” and “If MAPCY is for Relative Custody Assistance, what is the most recent supplemental level?”
- For the Youth and EFC-SIL templates, an additional question has been removed, “Is youth placed with their child?”

On the MAPCY Setup tab, two fields have been added; both are required fields and must be completed before you can proceed to the Document tab. Error messages will be displayed if the user tries to pick wrong selections. Depending upon the selections in these two fields, additional questions may or may not display and are required for agency approval.

1. Purpose

- Options to select are:
 - Foster care benefit level

- Initial permanency benefit level (NAA or NKA)
 - Post permanency reassessment (NAA or NKA)
 - Courtesy assessment for another agency or state
 - Fair Hearing permanency benefit level
 - Legally but not financially responsible agency
 - This field is to document why the MAPCY is being completed.
2. **Is there placement data to autofill?**
- Options to select are **Yes** or **No**
 - This is to determine if the Caregiver Information is already in the system; if the child is currently in an out-of-home placement that is entered in SSIS in the agency that is completing the MAPCY
 - *Example: No* may be elected if the MAPCY is being completed post-permanency or if it is being completed by the Legally but not Financially responsible agency
 - If **No** is selected the Placement Information Section on the Setup tab will not display below because there is not placement information to autofill into the MAPCY.
 - Additional fields display if No is selected. Agency staff can manually enter information in these fields.
 - Caregiver 1
 - Caregiver 2
 - Caregiver Address

MAPCY Setup Tab > Purpose and Is there Placement data to autofill? fields

The screenshot shows a software interface for setting up a MAPCY. At the top, the document is identified as 'Child Domains (Ages 0-12)'. Below this, the 'Agency' section is populated with 'Test County Family Services'. The 'County or tribe or agency' is set to 'Dodge'. The 'Purpose' dropdown menu is open, showing a list of options: 'Foster care benefit level', 'Initial permanency benefit level (NAA or NKA)', 'Post permanency reassessment (NAA or NKA)', 'Courtesy assessment for another agency or state', 'Fair Hearing permanency benefit level', and 'Legally but not financially responsible agency'. The 'Is there placement data to autofill?' dropdown menu is also open, showing 'yes' and 'no' options. The 'Assessment' section is partially visible at the bottom.

MAPCY Emergency Rate Clarification

The Emergency Foster Care Rate applies ONLY during the first 30 days of a continuous placement for foster care. After that it expires. Ordinarily, the assessor sets the effective date of a MAPCY assessment in the set-up screen. However, SSIS sets this date upon approval if this is the first approved assessment for a particular home. More information about this can be found in [SSIS Update # 411](#).

15.1 MAPCY functioning for the initial 30 days of placement has been changed. User alerts have been updated to include warnings when the effective date may be changed by the SSIS.

New Rules in 15.1

- If the MAPCY rating is Level D or higher:
 - SSIS sets the effective date of the MAPCY back to the beginning of the placement.
 - note that this does not change from the way SSIS works now
- If the MAPCY rating is Level B or C, then:
 - If the MAPCY approval date is before the 31st day
 - SSIS sets the effective date of the MAPCY to the date the MAPCY was approved.
 - If the MAPCY approval date is on or after the 31st day,
 - SSIS sets the effective date of the MAPCY to the 31st day of the continuous placement.

Approved MAPCY Level	SSIS v 14.4 Effective Date	SSIS v 15.1 Effective Date
Level D or higher	Beginning of placement location	Beginning of placement location
Level B or C, with <u>approval date days 1-30</u> of continuous placement	Day 31 of continuous placement	MAPCY Approval Date
Level B or C, with <u>approval date day 31 or later</u> of continuous placement	Day 31 of continuous placement	Day 31 of continuous placement

**Legally but not financially responsible agencies completing a MAPCY should ensure that the Effective dates are accurate.*

Changes to the MAPCY Scoring tab

- The field label “Final Benefit Level” is replaced by “**Standard + Extraordinary**” in the scoring screen. The values stored in that field are not changed.
 - This is an update from previous version that included a “Final Benefit Level” that displayed the Standard + Extraordinary level for any statuses (draft/denied/pending agency approval or approved).
- New field “Current Approved Level” is added in the scoring screen.
 - This displays only the Approved levels.
 - The value displayed for Current Approved Level in the scoring screen:
 - Current Approved Level = "Not Approved" - if Standard MAPCY is not Agency approved (Status = Draft or Pending agency approval)
 - Current Approved Level = “Standard Benefit Level” - if Standard MAPCY status is "Agency approved" and no Extraordinary Level exists
 - Current Approved Level = “Standard Benefit Level” - if Standard MAPCY status is "Agency approved" and Extraordinary Level exists but Extraordinary Level status is not “State Approved”.
 - Current Approved Level = “Standard + Extraordinary” - if Extraordinary Level exists and Extraordinary Level status is "State approved".

- The Extraordinary level increase, EL Status, Standard +Extraordinary level will be displayed in the scoring screen only when there is an Extraordinary level.
- These changes are also made in the MAPCY Rating Report.

MAPCY Assessment> Scoring tab for MAPCY with Standard and Extraordinary Level

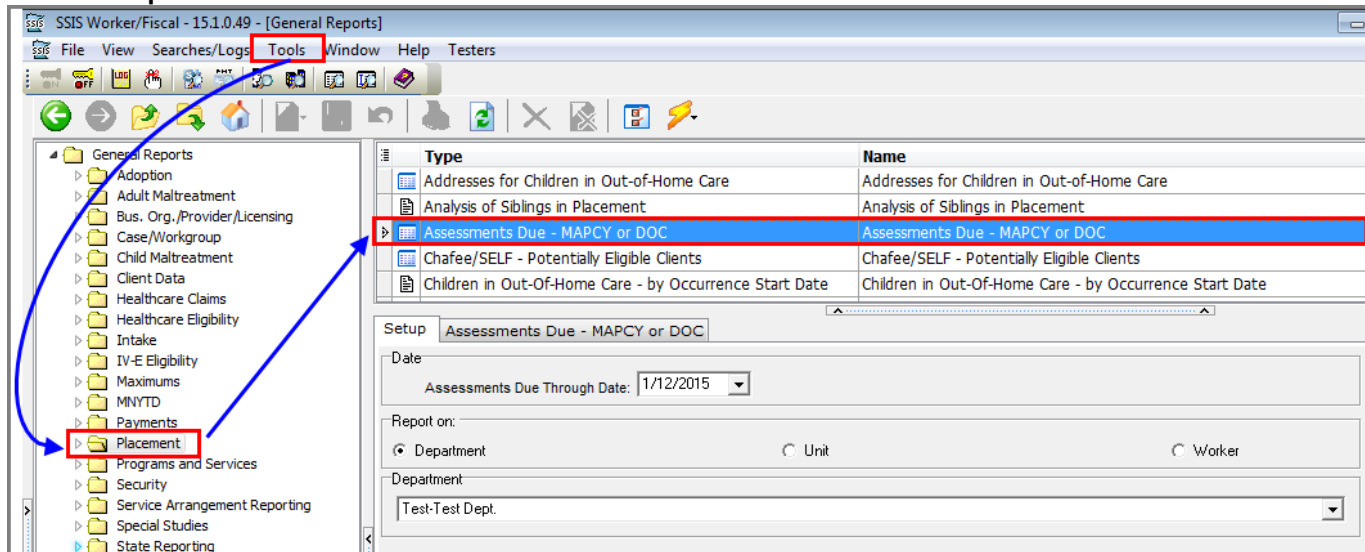
Setup Document Scoring Properties Comments						
Domain	Needs Rating	Indicator Rating	Regular Points	Special Points	Total Points	
A. Placement Experience	d	Exceptional	12		12	
B. Dynamics in the Caregiver's Home	b	Basic	2		2	
C. Supervision, Guidance, & Structure	d	Exceptional	15	9	24	
D1. Mental Health D2. Physical Health D3. Development	d d d	Exceptional	24	18	42	
E. Preserving Connections	c	Extensive	6		6	
F. Developing Identity	d	Exceptional	7	4	11	
G. Education	d	Extensive	5	5	10	
			71	36	107	

Score	Starting Benefit Level:	L	Status:	Draft
	Child Care Level Increase:	0		
	Standard Benefit Level:	L	Status:	Draft
	Extraordinary Level Increase:	5	Status:	Draft
	Standard + Extraordinary:	Q		
Current Approved Level:		Not Approved		

New General Report

A new General report has been developed, **Assessment Due- MAPCY or DOC**. The report lists children and youth in currently open Northstar Care or Legacy placement settings where the MAPCY or DOC next due date is anytime on or before the date selected by the user.

General Reports > Placement > Assessments Due – MAPCY or DOC



1. Select **Tools**.
2. Under the General Reports folder, Select the **Placement** subfolder.
3. Select **Assessment Due- MAPCY or DOC** in the tree view or from the grid.
4. Complete the Set up tab and Select **Search**. Results display.

Assessments Due – MAPCY or DOC > Setup tab

