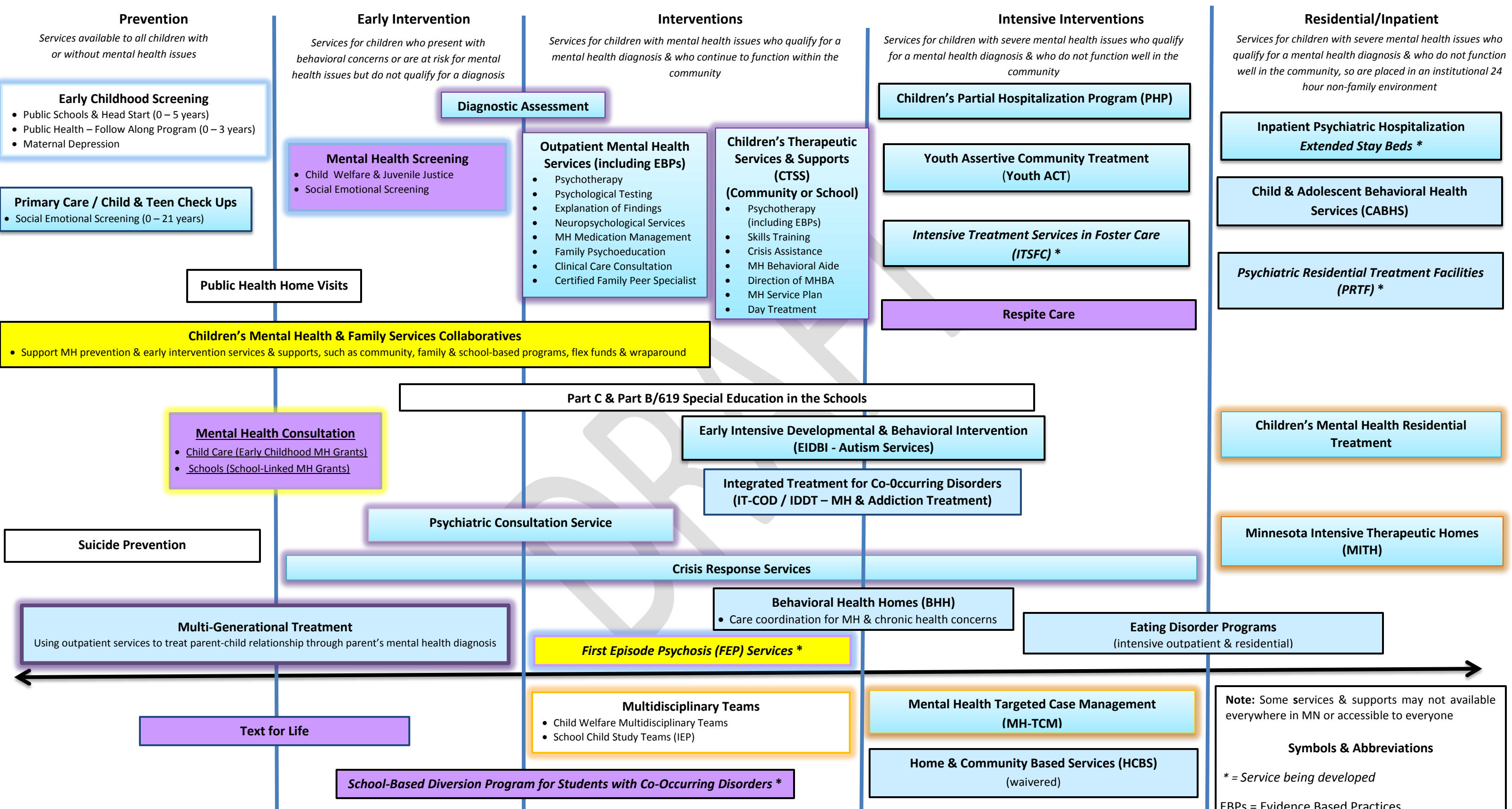


Children's Mental Health Continuum of Care (Draft - May 24, 2016)



Prevention
Services available to all children with or without mental health issues

- Early Childhood Screening**
 - Public Schools & Head Start (0 – 5 years)
 - Public Health – Follow Along Program (0 – 3 years)
 - Maternal Depression
- Primary Care / Child & Teen Check Ups**
 - Social Emotional Screening (0 – 21 years)
- Public Health Home Visits**

Early Intervention
Services for children who present with behavioral concerns or are at risk for mental health issues but do not qualify for a diagnosis

- Mental Health Screening**
 - Child Welfare & Juvenile Justice
 - Social Emotional Screening

Interventions
Services for children with mental health issues who qualify for a mental health diagnosis & who continue to function within the community

- Diagnostic Assessment**
- Outpatient Mental Health Services (including EBPs)**
 - Psychotherapy
 - Psychological Testing
 - Explanation of Findings
 - Neuropsychological Services
 - MH Medication Management
 - Family Psychoeducation
 - Clinical Care Consultation
 - Certified Family Peer Specialist
- Children's Therapeutic Services & Supports (CTSS) (Community or School)**
 - Psychotherapy (including EBPs)
 - Skills Training
 - Crisis Assistance
 - MH Behavioral Aide
 - Direction of MHBA
 - MH Service Plan
 - Day Treatment

Intensive Interventions
Services for children with severe mental health issues who qualify for a mental health diagnosis & who do not function well in the community

- Children's Partial Hospitalization Program (PHP)**
- Youth Assertive Community Treatment (Youth ACT)**
- Intensive Treatment Services in Foster Care (ITSFC) ***
- Respite Care**

Residential/Inpatient
Services for children with severe mental health issues who qualify for a mental health diagnosis & who do not function well in the community, so are placed in an institutional 24 hour non-family environment

- Inpatient Psychiatric Hospitalization Extended Stay Beds ***
- Child & Adolescent Behavioral Health Services (CABHS)**
- Psychiatric Residential Treatment Facilities (PRTF) ***

Children's Mental Health & Family Services Collaboratives
Support MH prevention & early intervention services & supports, such as community, family & school-based programs, flex funds & wraparound

Part C & Part B/619 Special Education in the Schools

Mental Health Consultation
Child Care (Early Childhood MH Grants)
Schools (School-Linked MH Grants)

Early Intensive Developmental & Behavioral Intervention (EIDBI - Autism Services)

Integrated Treatment for Co-Occurring Disorders (IT-COD / IDDT – MH & Addiction Treatment)

Psychiatric Consultation Service

Suicide Prevention

Crisis Response Services

Children's Mental Health Residential Treatment

Behavioral Health Homes (BHH)
Care coordination for MH & chronic health concerns

Multi-Generational Treatment
Using outpatient services to treat parent-child relationship through parent's mental health diagnosis

First Episode Psychosis (FEP) Services *

Eating Disorder Programs
(intensive outpatient & residential)

Minnesota Intensive Therapeutic Homes (MITH)

Multidisciplinary Teams
Child Welfare Multidisciplinary Teams
School Child Study Teams (IEP)

Mental Health Targeted Case Management (MH-TCM)

Text for Life

School-Based Diversion Program for Students with Co-Occurring Disorders *

Home & Community Based Services (HCBS)
(waivered)

Note: Some services & supports may not available everywhere in MN or accessible to everyone

Symbols & Abbreviations
* = Service being developed
EBPs = Evidence Based Practices
IEP = Individualized Education Program
MH = Mental Health

KEY: = Funded by Other Systems (corrections, public health, schools, tribal, etc.) = County Funded = Medicaid Funded = DHS/CMH Contracts = Federally Funded