

---

---

---

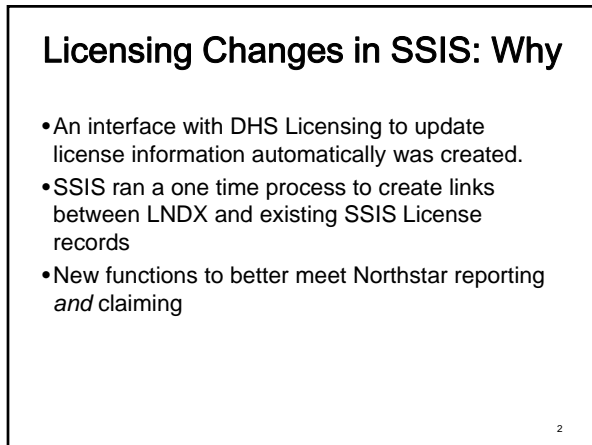
---

---

---

---

---



---

---

---

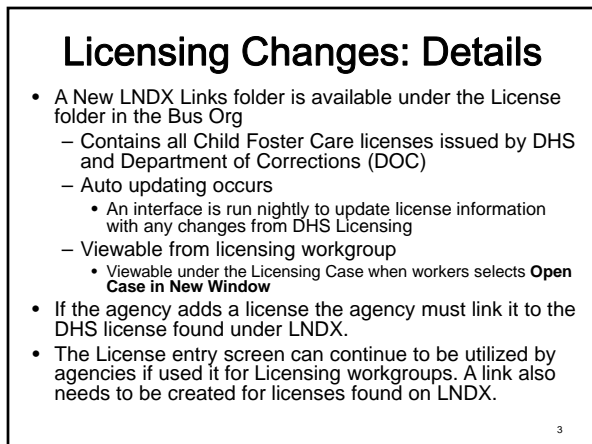
---

---

---

---

---



---

---

---

---

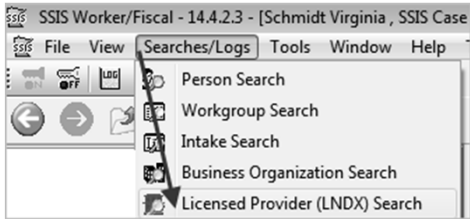
---

---

---

---

## Licensing Changes: LNDX Links



4

---

---

---

---

---

---

---

---

## LNDX Links: Biz Org Tree View



---

---

---

---

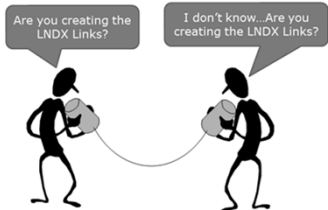
---

---

---

---

## Who completes the LNDX Link Process?



**Agencies must determine the staff and process to complete this action.**

6

---

---

---

---

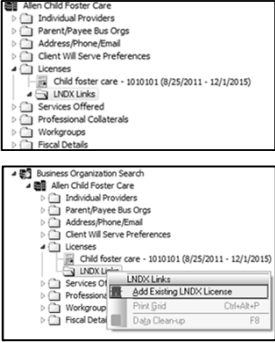
---

---

---

---

### Licensed Provider (LNDX) Search



Create the LNDX Links record if:

- SSIS did not create a link
- A new Bus Org is added
- A new License is granted

To link the license:

- Access the **Action Menu**
- Select **Add Existing LNDX License**

12/10/2014 7

---

---

---

---

---

---

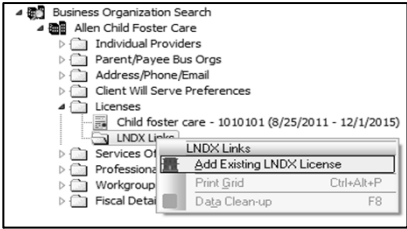
---

---

---

---

### Access LNDX Links



To link the license:

- Access the **Action Menu**.
- Select **Add Existing LNDX License**.

8

---

---

---

---

---

---

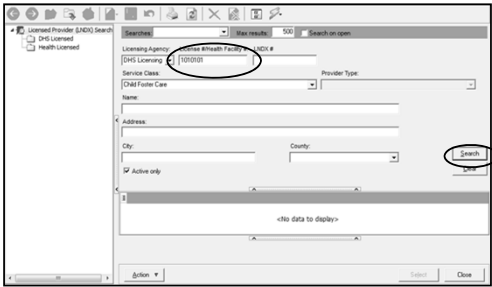
---

---

---

---

### Licensed Provider (LNDX) Search



• Enter search criteria and click **Search**.

9

---

---

---

---

---

---

---

---

---

---





### LNDX: Service Arrangements and Payment

- For both Service Arrangements and Payments, the License # drop down displays all the LNDX links.
  - The drop down also includes License records entered in SSIS for Tribally licensed/approved or Out of State Family Foster Homes
  - Multiple LNDX Link records may exist for a provider if they have multiple licenses, for example, a child foster care license and an adult foster care license.
    - If there are multiple records, be sure to select the correct license number from the drop down.
- The license number is required to include the Payment on either the Title IV-E Abstract or Northstar report and if it is not the correct setting, you will receive a proofing message on the report.
- If your agency continues to use the SSIS License entry screen for licensing workgroups and a link is not created, that license number does not display in the drop-down.

16

---

---

---

---

---

---

---

---

### Licensing Record Update

- Two new Rule 4 Child Care - Placing Agencies added to the License record:
  - Children’s Home Society of MN  
*(formerly Children’s Home Society & Family Services)*
  - Evolve Adoption and Family Services  
*(formerly HOPE Adoption and Family Services International Inc.)*

17

---

---

---

---

---

---

---

---