


# SSIS Background

How did we get here?



1

---

---

---

---

---


---

---

---

## What is the Social Services Information System (SSIS)?

- ▶ Minnesota's child welfare case management system
- ▶ Minnesota's computer system for gathering and reporting child welfare data
- ▶ Minnesota's adult protective services (aps) case management system
- ▶ Minnesota's computer system for gathering and reporting adult protection data
- ▶ Used by over 6,000 county, tribal and state agency employees to track social services provided to children and adults
- ▶ Tracks social services provided to over 260,000 Minnesotans each year
- ▶ Minnesota's Statewide Automated Child Welfare Information System (SACWIS)



2

---

---

---

---


---

---

---

---

**S** tatewide  
**A** utomated  
**C** hild  
**W** elfare  
**I** nformation  
**S** ystem



3

---

---

---

---

---


---

---

---

**As a SACWIS, SSIS must meet federal requirements:**  
 62 Required areas  
 35 Optional areas

**Required areas include:**  
 Intake  
 Eligibility (IV-E)  
 Case Management  
 Financial Management (Fiscal)  
 Resource Management  
 Court Processing  
 Reporting  
 Interfaces  
 Administrative Support  
 Security



4

---

---

---

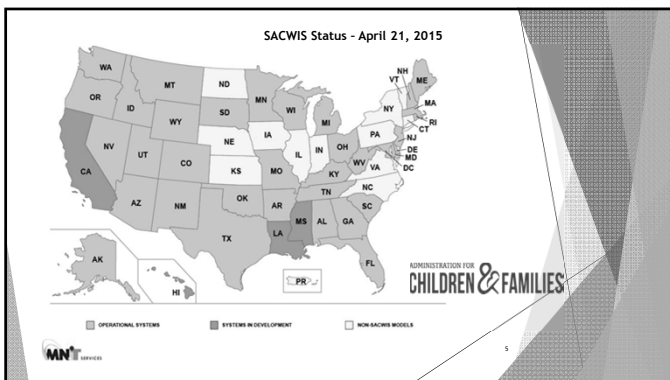
---

---

---

---

---




---

---

---

---

---

---


---

---

**Required Federal Reporting (began 1994)**

**Federal Financial Participation (FFP)**

**All Child Welfare information in single system**



6

---

---

---

---

---

---

---

---

**Minnesota developed core functions**

- Functions used by *all* programs, such as:
  - Case Notes
  - Time Reporting
  - Programs and Services
  - Service Arrangements & Payments
- Specialization for:
  - Child Welfare,
  - Child Protective Services,
  - Adult Protective Services (later - 2008)



7

---

---

---

---

---

---

---

---

**A** doption &  
**F** oster  
**C** are  
**A** nalysis &  
**R** eporting  
**S** ystem



8

---

---

---

---

---

---

---

---

**N** ational  
**C** hild  
**A** buse &  
**N** egllect  
**D** ata  
**S** ystem



9

---

---

---

---


---

---

---

---

**N ational  
Y outh in  
T ransition  
D atabase**



10

---

---

---

---

---


---

---

---

**Federal Regulatory Citations**

SACWIS: 45 CFR 95  
 AFCARS: 45 CFR 1355  
 NCANDS, based on CAPTA: P.L. 111-320, Title I Section 106 [42 USC 5106a]  
 NYTD: 45 CFR 1356



11

---

---

---

---

---

---

---

---

**Questions?**

Contact:  
 Jean Swanson Broberg  
 Systems Analysis Unit Supervisor  
 Program Management Division  
 MN.IT @ DHS/ SSIS  
 651-431-4746  
 jean.swanson-broberg@state.mn.us



12

---

---

---

---

---

---

---

---