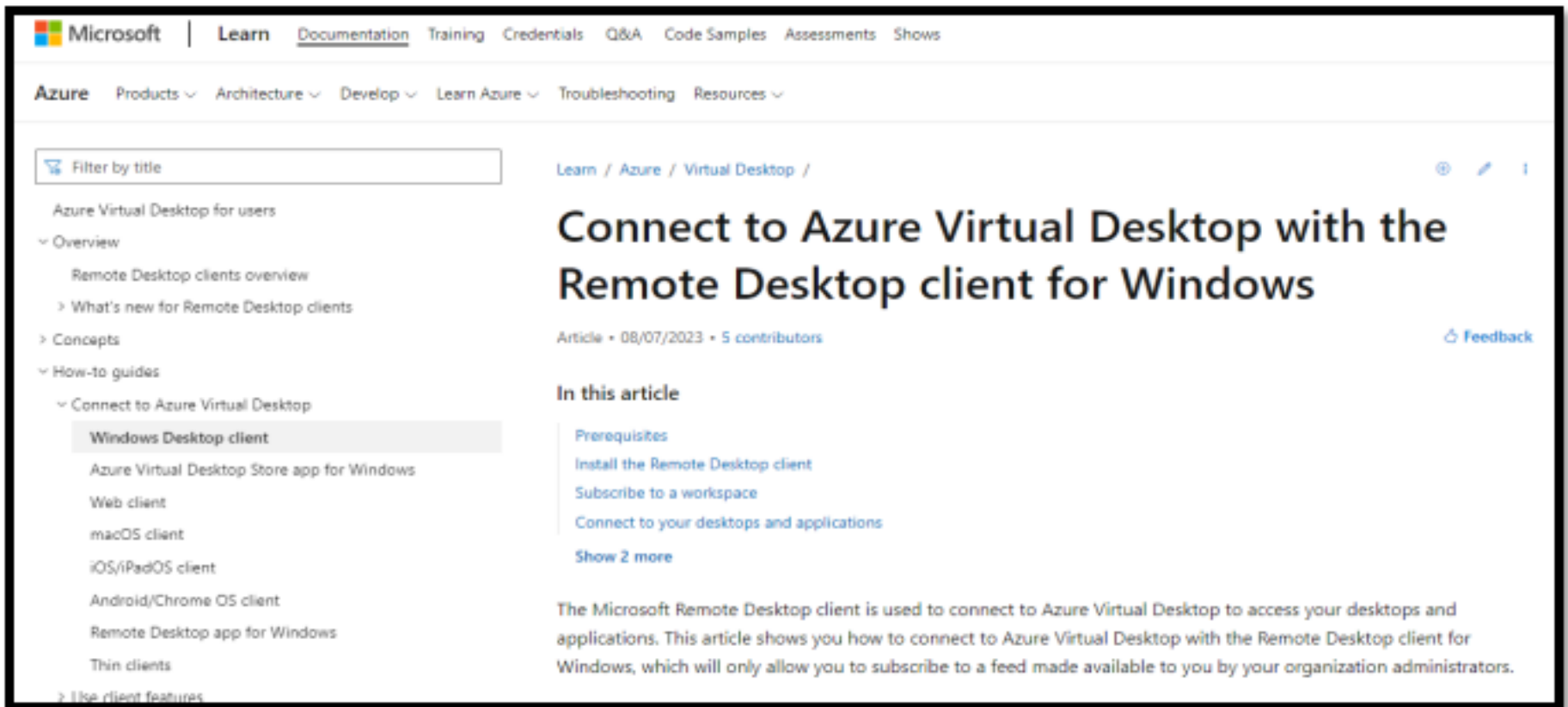


Azure Virtual Desktop Install-Part I

1. Navigate to Microsoft Website to <https://learn.microsoft.com/en-us/azure/virtual-desktop/users/connect-windows?tabs=subscribe>



2. Scroll down on the page to download the Remote Desktop Client installer, most often this is the Windows 64-bit client.

Important

- Support for Windows 7 ended on January 10, 2023.
- Support for Windows Server 2012 R2 ended on October 10, 2023. For more information, view [SQL Server 2012 and Windows Server 2012/2012 R2 end of support](#).

• Download the Remote Desktop client installer, choosing the correct version for your device:

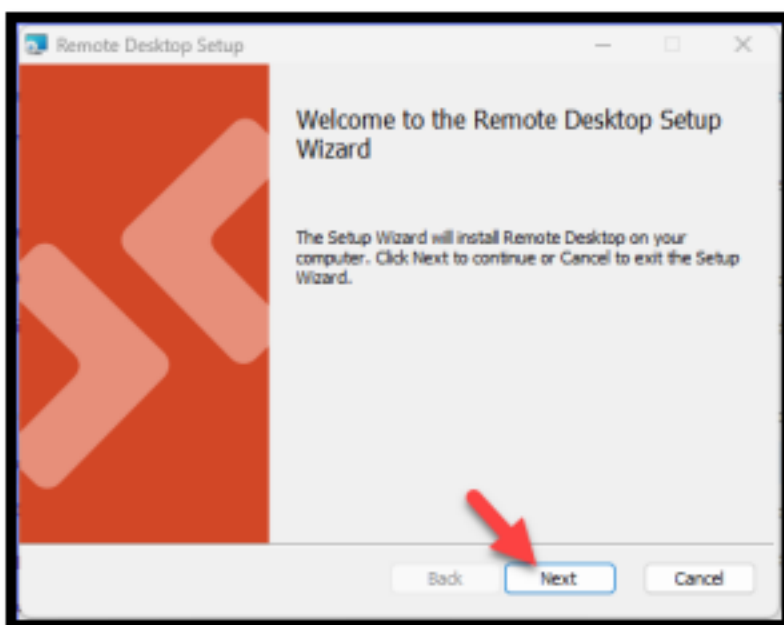
- [Windows 64-bit](#) *(most common)* ←
- [Windows 32-bit](#)
- [Windows ARM64](#)

• .NET Framework 4.6.2 or later. You may need to install this on Windows Server 2012 R2, Windows Server 2016, and some versions of Windows 10. To download the latest version, see [Download .NET Framework](#).

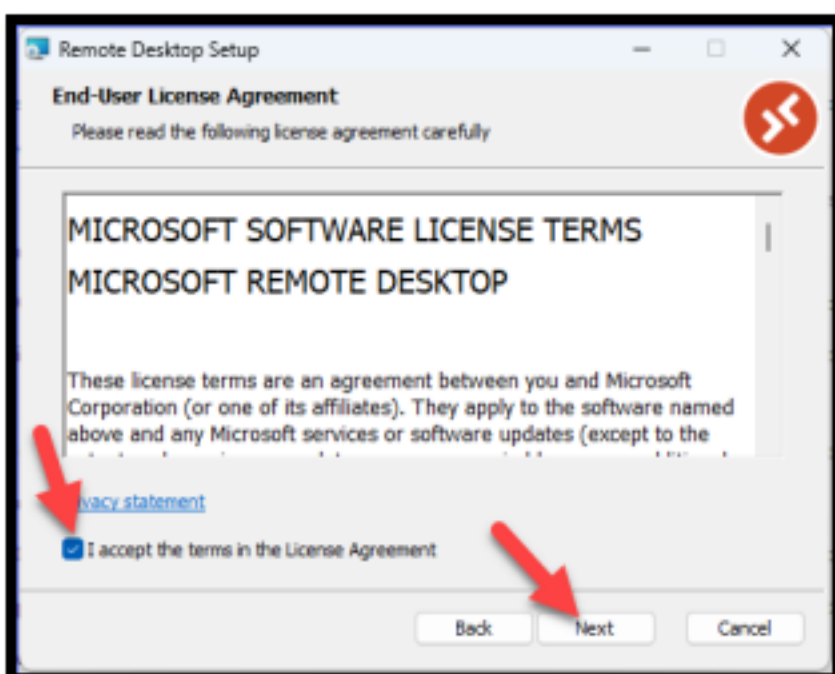
3. Run the "RemoteDesktop" installer from your downloads directory by double clicking the file.



4. On the welcome screen, select **Next**.



5. To accept the end-user license agreement, check the box for "I accept the terms in the License Agreement", then select **Next**.



6. For the Installation Scope, select one of the following options:

Install just for you: Remote Desktop will be installed in a per-user folder and be available just for your user account. You don't need local Administrator privileges.

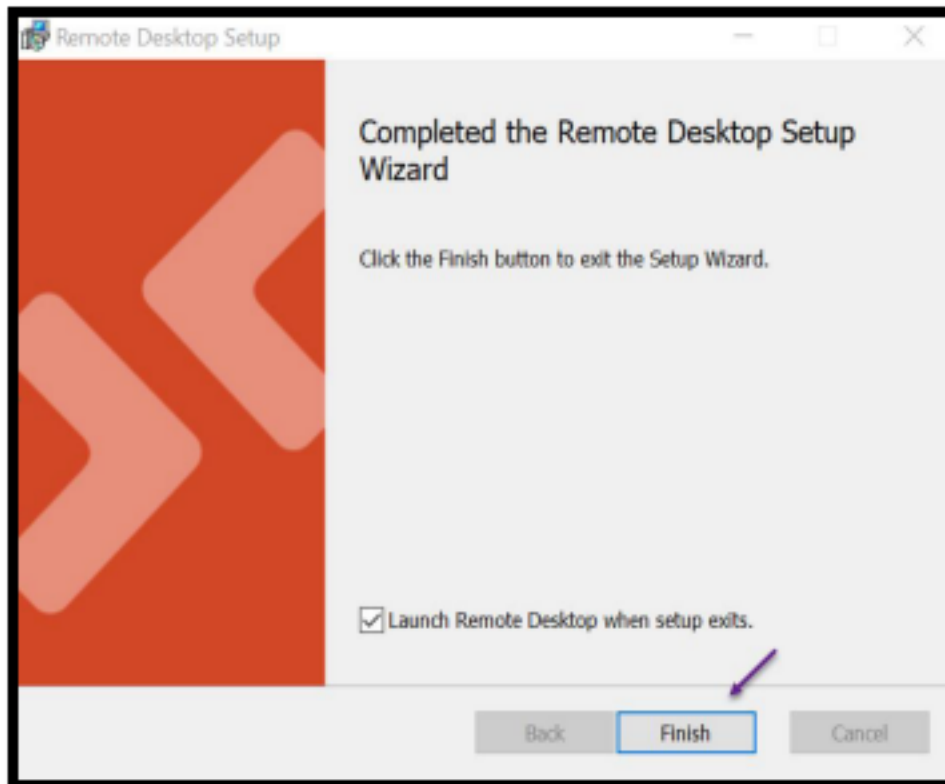
Install for all users of this machine: Remote Desktop will be installed in a per-machine folder and be available for all users. You must have local Administrator privileges.

7. Select **Install**.

If you are prompted for your credentials for login, **check with your IT department** to have them complete the install as administrator. If IT department is okay with local user only install, choose *“Install just for you”* above.

If you are prompted with a *“Do you want to allow this app to make changes to your device?”* Select **Yes**

8. Once installation is complete, select **Finish**.



9. If you left the box for **Launch Remote Desktop when setup exits** selected, the Remote Desktop client will automatically open. Alternatively, to launch the client after installation, use the Start menu to search for and select **Remote Desktop**. You can then pin Remote Desktop to your taskbar or start menu if desired.
10. Note that you will not be able to subscribe to the SSIS icons until the week of your agency's migration to Azure. Separate instructions will be provided prior to your migration.