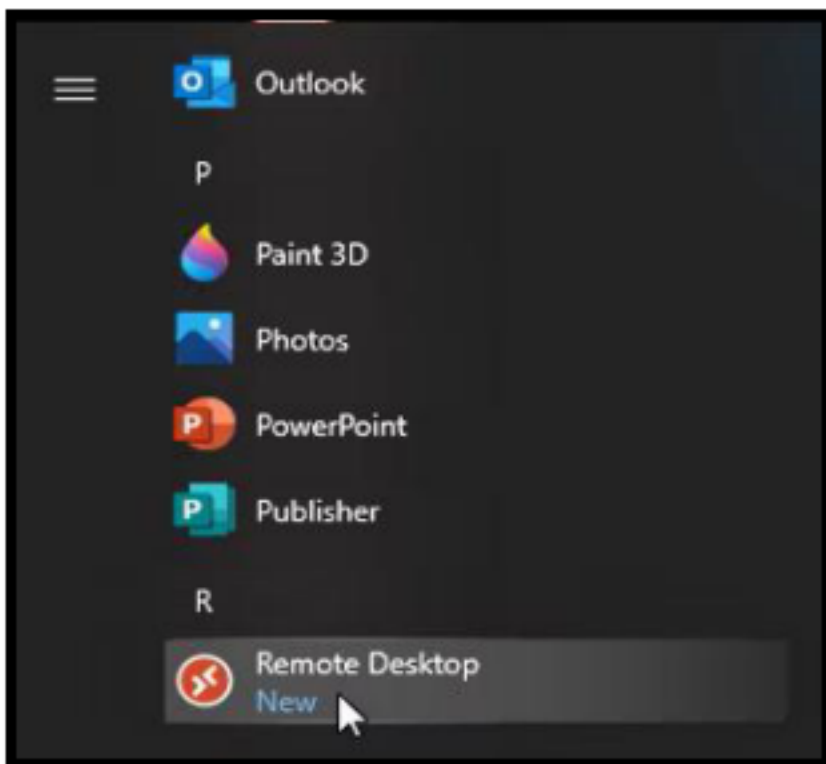
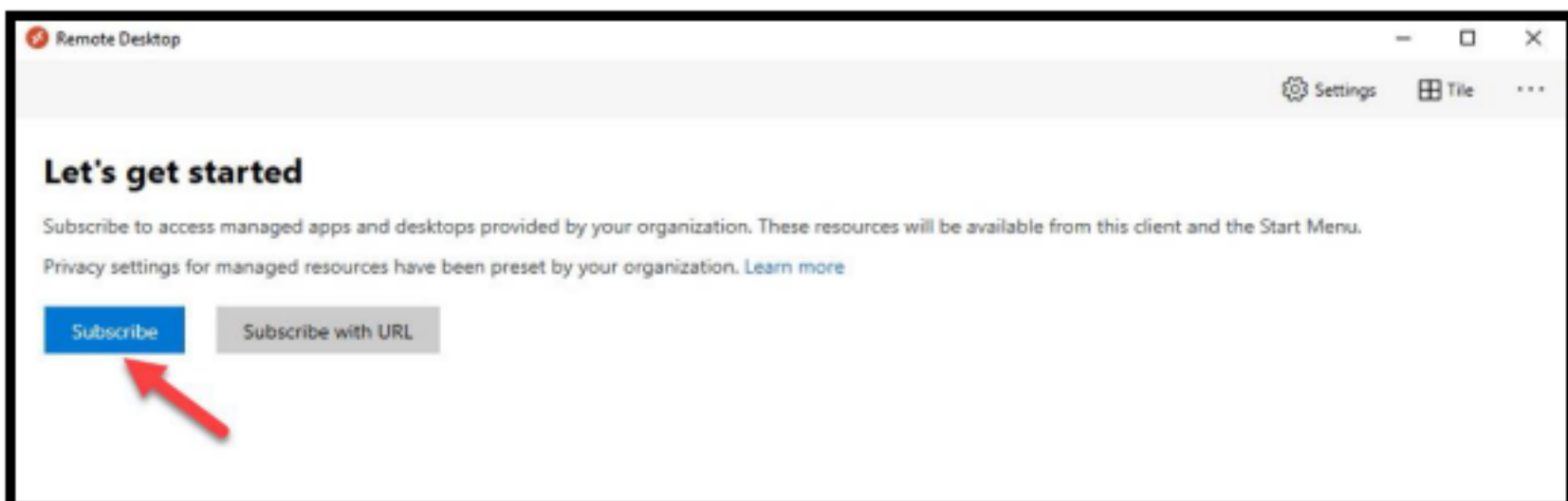


Azure Virtual Desktop Install-Part II (launching Remote Desktop, subscribing to your SSIS Icons, and launching SSIS for the First Time)

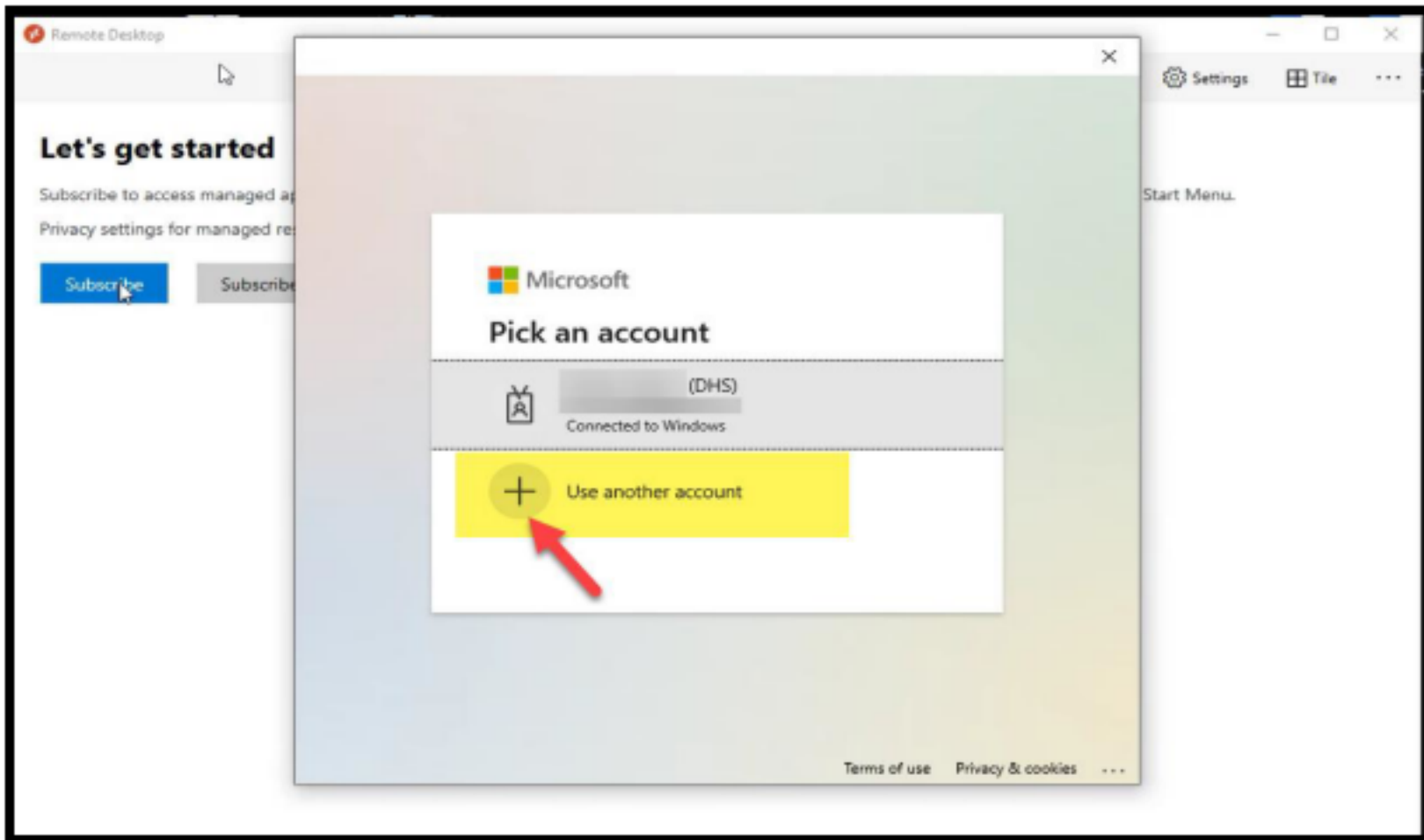
1. After installing Microsoft Remote Desktop, click your Windows start menu and look for **Remote Desktop**.



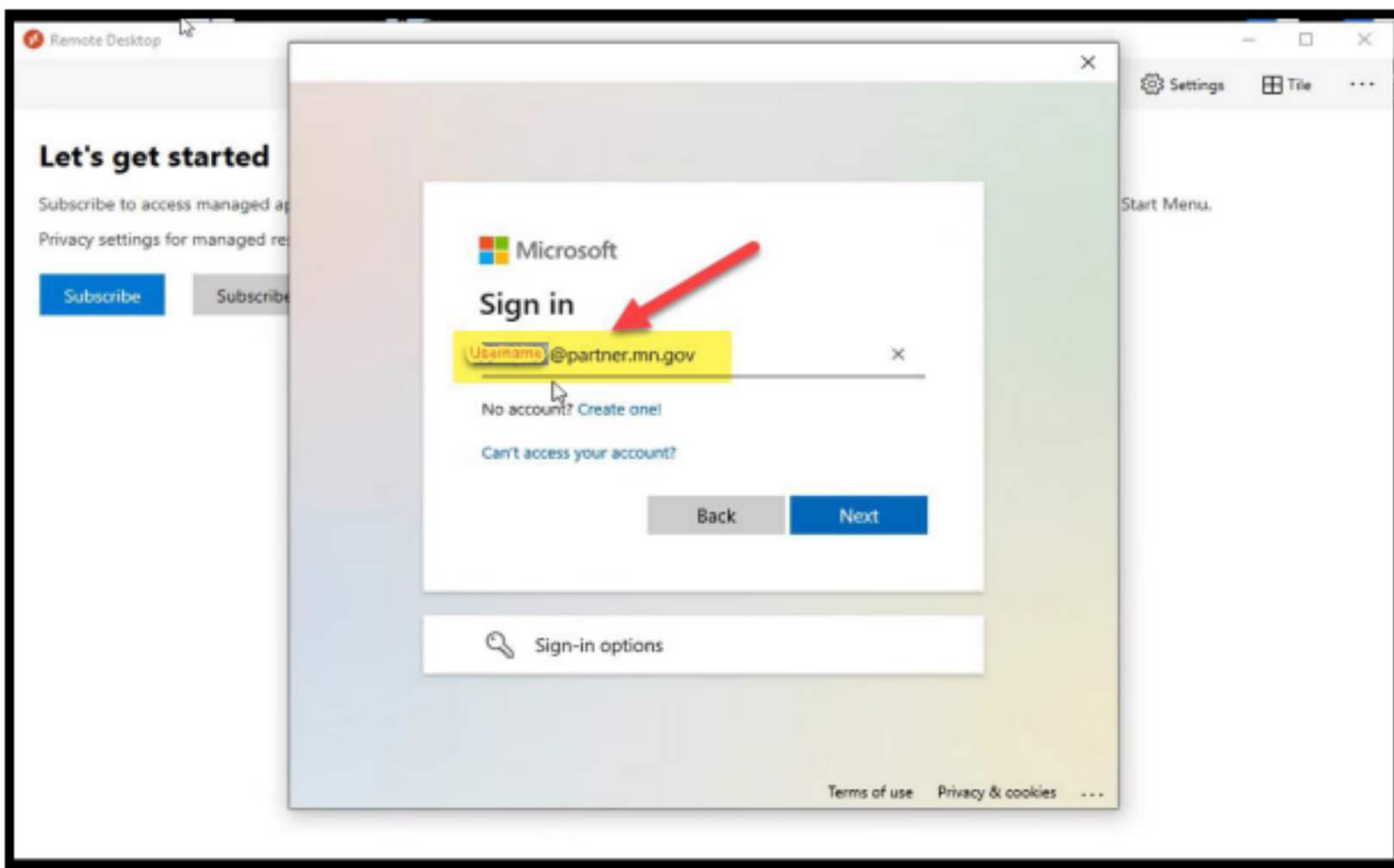
2. You will be prompted to Subscribe. Click the **Subscribe** button.



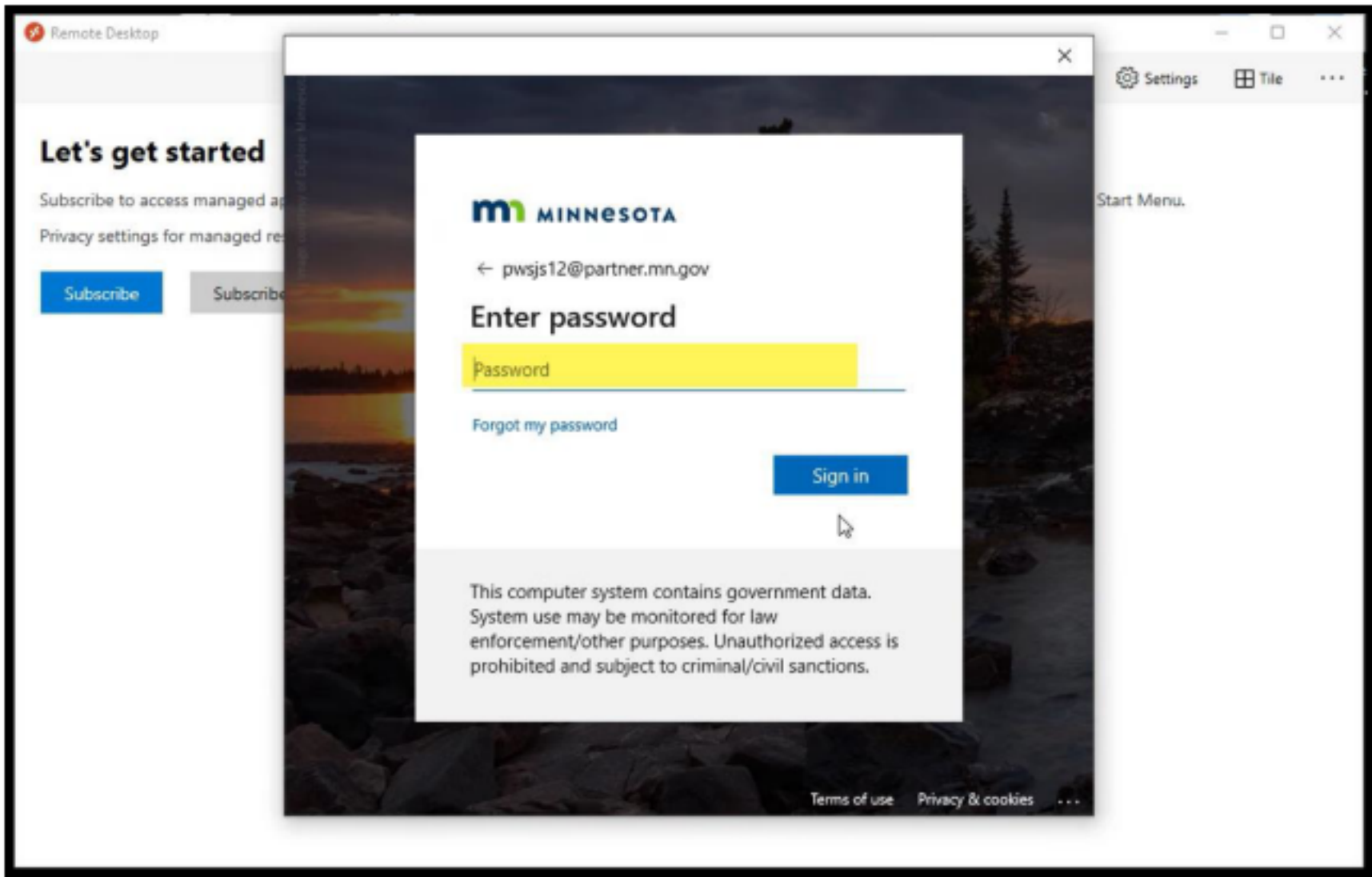
3. You will be prompted to pick an account. Click **Use Another Account**.



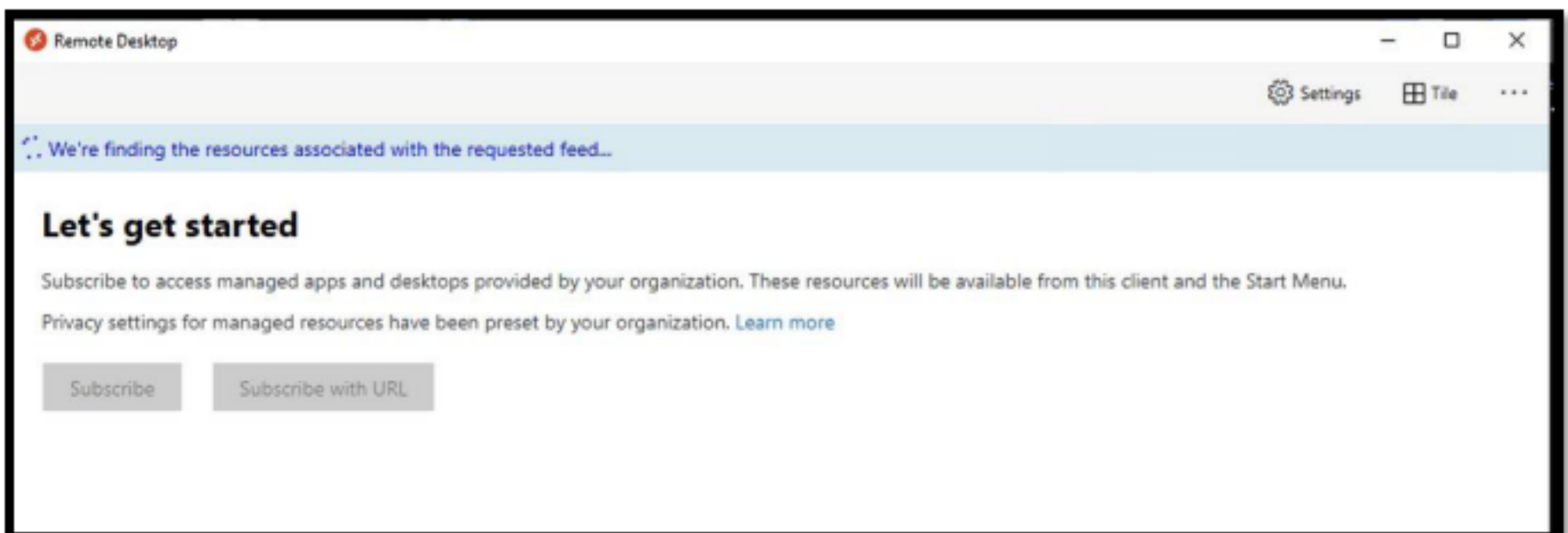
4. On the Sign In screen, enter [Your-SSIS-Username}@partner.mn.gov](#).



5. You will be prompted for a password. Enter your **SSIS Password** and click **Sign In**.



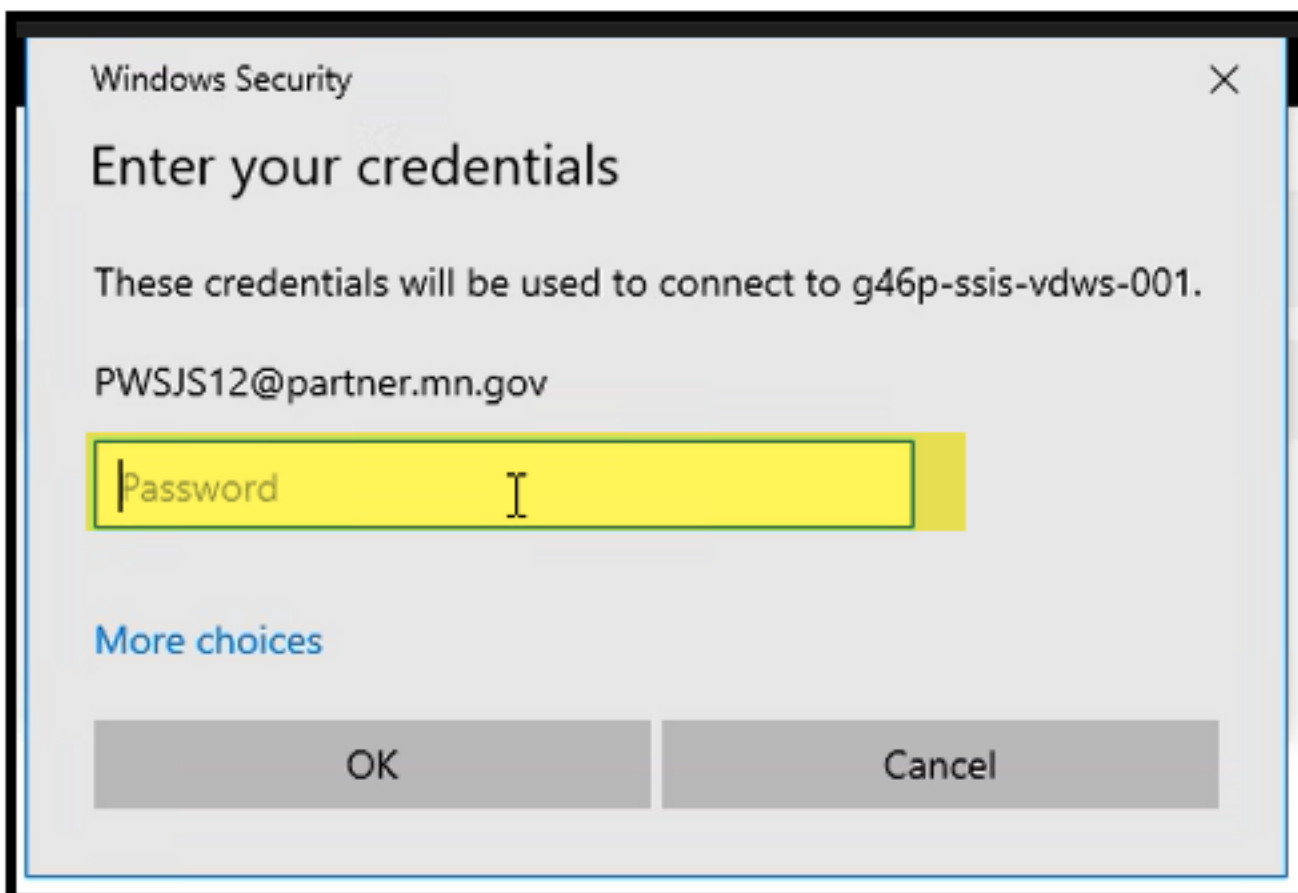
6. Wait a moment for Azure to find the resources associated...



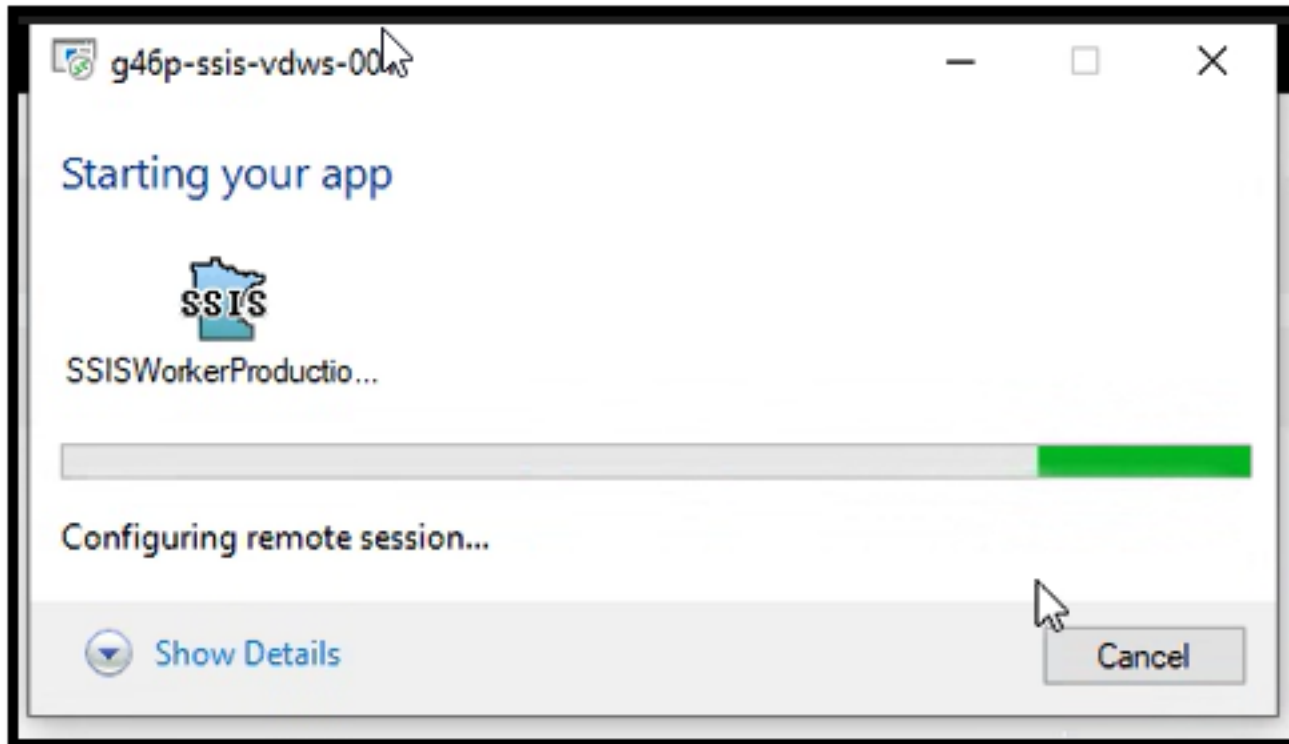
7. You will be presented with the icons that are available to you. Double click the application you wish to launch.



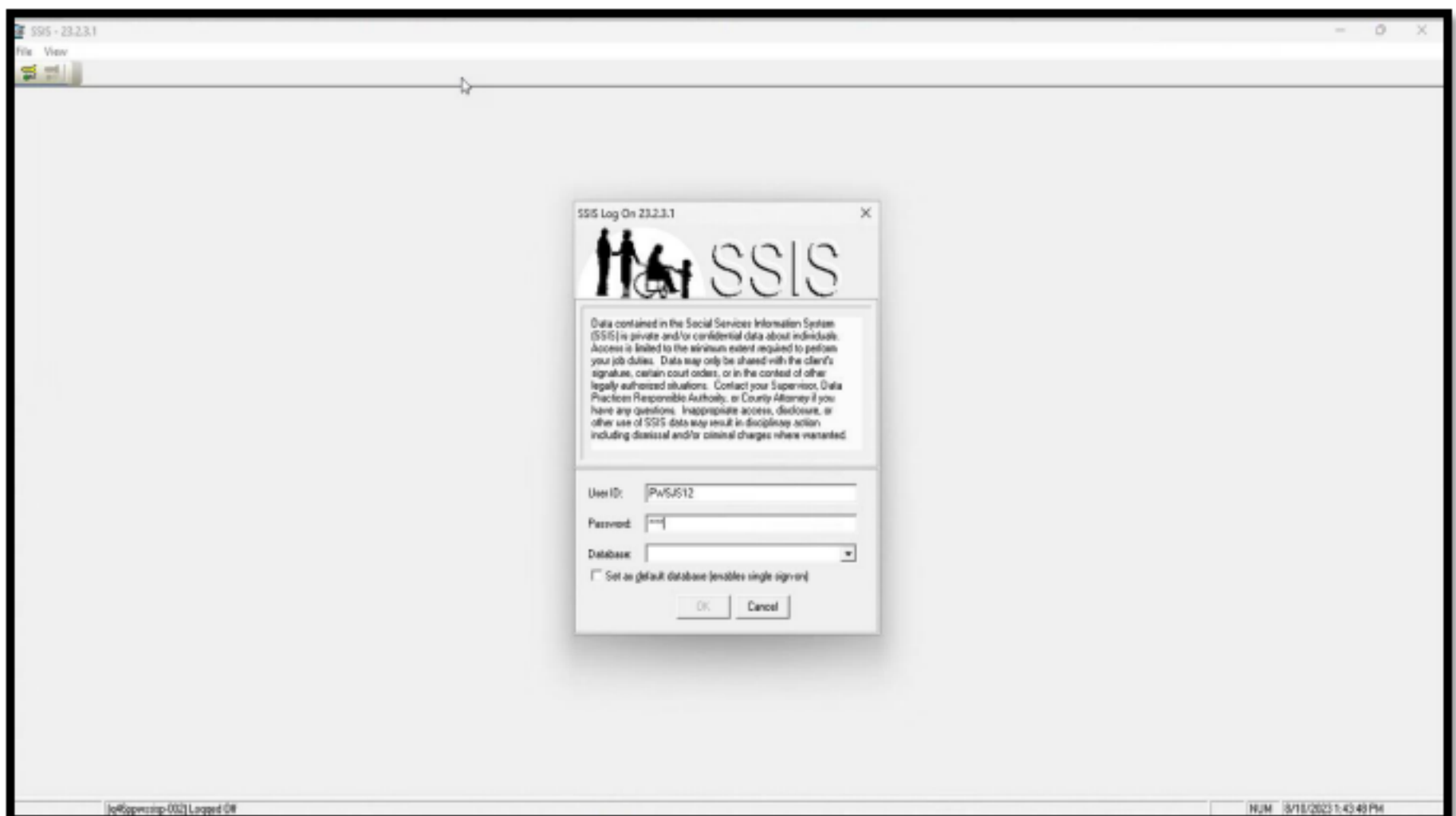
8. You will be promoted to enter your credentials again. Enter your **SSIS Password**.



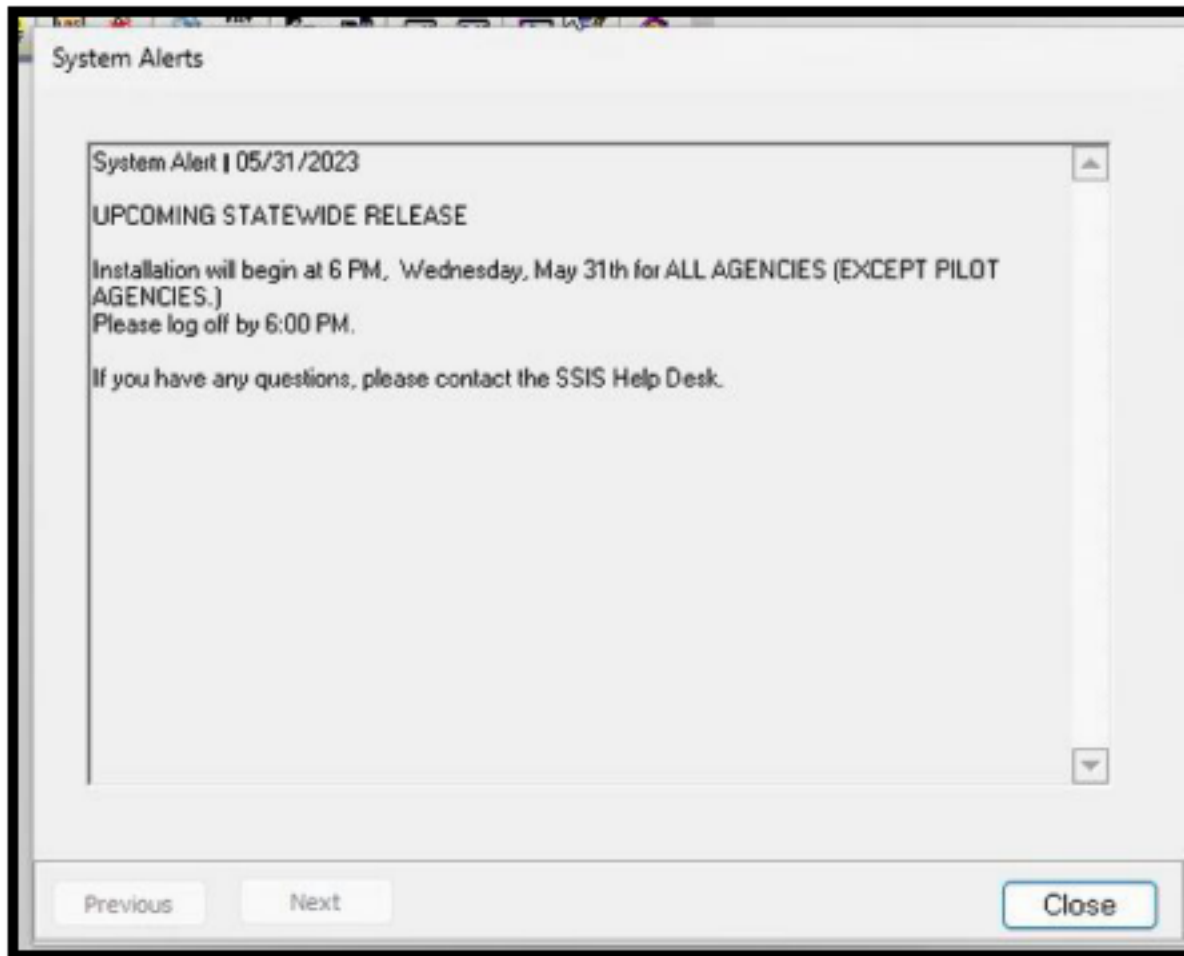
9. You will see this box while the remote session loads. Note that sometimes, this box can be hidden behind other screens.



10. Log into SSIS with your username and password. You will need to pick a database the first time you log in.



11. You may also see an old alert the first time you log in. This should not repeat with subsequent log ins.



12. To exit from SSIS, you only need to do FILE>LOGOFF and FILE>EXIT. There is no need to disconnect from Remote Desktop.